

# Temporal trends in the cardiorespiratory fitness of children and adolescents representing 19 high-income and upper middle-income countries between 1981 and 2014

Grant R Tomkinson,<sup>1,2</sup> Justin J Lang,<sup>3</sup> Mark S Tremblay<sup>3</sup>

► Additional material is published online only. To view please visit the journal online (<http://dx.doi.org/10.1136/bjsports-2017-097982>).

<sup>1</sup>Department of Kinesiology and Public Health Education, University of North Dakota, Grand Forks, North Dakota, USA

<sup>2</sup>Alliance for Research in Exercise, Nutrition and Activity (ARENA), School of Health Sciences & Sansom Institute for Health Research, University of South Australia, Adelaide, South Australia, Australia

<sup>3</sup>Healthy Active Living and Obesity Research Group, Children's Hospital of Eastern Ontario Research Institute, Ottawa, Ontario, Canada

## Correspondence to

Dr Grant R Tomkinson, Department of Kinesiology and Public Health Education, University of North Dakota, 2751 2nd Avenue North, Stop 8235, Grand Forks, ND 58202, USA; [grant.tomkinson@und.edu](mailto:grant.tomkinson@und.edu)

Accepted 25 September 2017  
Published Online First  
30 October 2017



**To cite:** Tomkinson GR, Lang JJ, Tremblay MS. *Br J Sports Med* 2019;**53**:478–486.

## ABSTRACT

**Objective** To estimate international and national temporal trends in the cardiorespiratory fitness (CRF) of children and adolescents and to examine relationships between temporal trends in CRF and temporal trends in broad socioeconomic and health-related indicators across countries.

**Methods** Data were obtained from a systematic search of studies that explicitly reported 20 m shuttle run test (a validated measure of CRF) descriptive data on apparently healthy individuals aged 9–17 years. Following the estimation of relative peak oxygen uptake (mL/kg/min) as a measure of CRF, sample-weighted temporal trends were estimated at the country–sex–age level using best-fitting linear or polynomial regression models relating the year of testing to mean CRF. Poststratified population-weighted mean changes in absolute and per cent CRF were estimated. Pearson's correlations were used to describe the association between linear temporal trends in CRF and linear temporal trends in broad socioeconomic and health-related indicators.

**Results** Temporal trends were estimated from 965 264 children and adolescents from 19 high-income and upper middle-income countries between 1981 and 2014, using data from 137 studies. Collectively, there was a moderate decline in CRF of 3.3 mL/kg/min (95% CI –3.5 to –3.1), equivalent to a decline of 7.3% (95% CI –7.8% to –6.7%) over the 33-year time period. This international decline diminished with each decade and stabilised near zero around 2000. The decline was larger for boys than girls and was similar for children and adolescents. Trends also differed in magnitude and direction between countries, with most showing declines. There was a strong negative association between country-specific trends in income inequality (Gini index) and trends in CRF across 18 countries; meaning, countries approaching income equality had more favourable trends in CRF.

**Conclusions** There has been a substantial decline in CRF since 1981, which is suggestive of a meaningful decline in population health. However, the international trend in CRF has not followed the anticipated trajectory, diminishing and stabilising with negligible change since 2000. CRF data are needed from children in low-income and middle-income countries to more confidently determine true international trends and determine whether temporal trends are similar to those observed in high-income and upper middle-income countries.

## INTRODUCTION

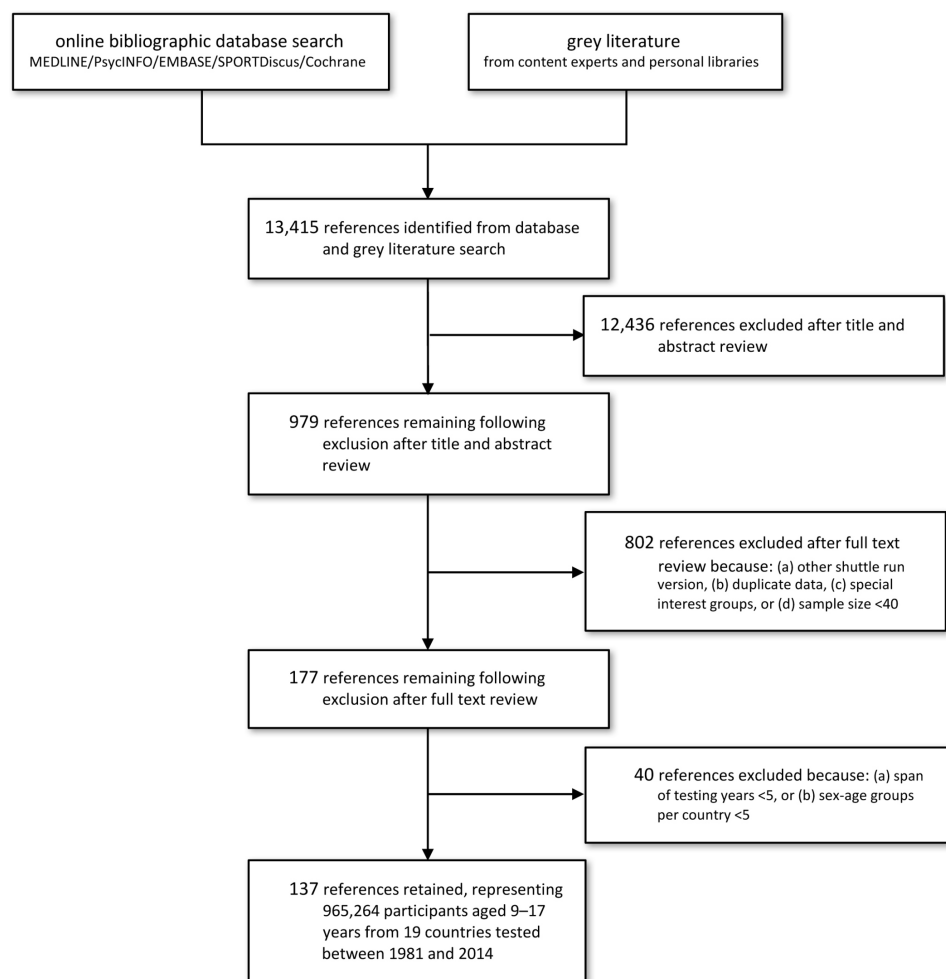
Cardiorespiratory fitness (CRF) is an important marker of good health<sup>1,2</sup> and is the fourth leading risk factor for cardiovascular disease.<sup>3</sup> In adults, CRF is strongly and independently associated with cardiovascular and all-cause mortality and morbidity,<sup>4,5</sup> stroke,<sup>6</sup> cancer,<sup>7</sup> diabetes and many other risk factors and comorbidities.<sup>8</sup> A meta-analysis by Kodama *et al*<sup>9</sup> reported that every metabolic equivalent (3.5 mL/kg/min) decrease in adult CRF was associated with a 15% and 13% increase in cardiovascular and all-cause mortality, respectively. While meaningful associations between CRF and cardiovascular disease risk have been reported in young people,<sup>1,10</sup> until recently, the association between CRF and mortality had not been examined directly. Two studies, one that followed-up 1.3 million 18-year-old Swedish men for 29 years<sup>11</sup> and another that followed up 510 16-year-old Japanese girls for 64 years,<sup>12</sup> found that low CRF in late adolescence was significantly linked with all-cause mortality in adulthood.

Examination of temporal trends in CRF should provide meaningful insight into trends in population health and may help guide and evaluate health programmes, policies and priorities. Although gas analysed peak oxygen uptake ( $\dot{V}O_{2peak}$ ) is the criterion measure of children's CRF,<sup>13</sup> it is not practical for mass testing. Properly conducted field-based CRF testing offers a simple, feasible, practical, reliable and valid alternative to gas analysis<sup>14,15</sup> and has been widely used on children and adolescents. To date, the most comprehensive summaries of temporal trends in field-based CRF indicate international declines from the mid-1970s to the early 2000s.<sup>16,17</sup> Data on 129 882 children and adolescents aged 6–19 years from 11 countries indicated a decline in mean CRF (operationalised as performance on the 20 m shuttle run test (20mSRT))<sup>18</sup>—a progressive exercise test involving continuous running between two lines 20 m apart in time to recorded beeps) of 4.3% per decade between 1981 and 2000.<sup>16</sup> In a follow-up study, mean CRF (operationalised as distance running and 20mSRT performance) was reported to have declined by 3.6% per decade in 25.4 million of individuals aged 6–19 years from 27 countries between 1958 and 2003.<sup>17</sup>

Unfortunately, little is known about current international and national trends because the data coverage in most studies only extends to 2003,

Protected by copyright, including for uses related to text and data mining, AI training, and similar technologies.

Br J Sports Med: first published as 10.1136/bjsports-2017-097982 on 30 October 2017. Downloaded from <http://bjsm.bmj.com/> on June 4, 2025 at Department GEZ-LTA



**Figure 1** PRISMA flow chart outlining the flow of studies through the review. PRISMA, Preferred Reporting Items for Systematic Review and Meta-Analysis.

although several (but not all) studies reporting national trends suggest CRF has stabilised in the past decade.<sup>19–21</sup> Furthermore, our recent study identified a strong cross-sectional association between country-specific CRF and income inequality (Gini index),<sup>22</sup> providing insight into potential population health programmes, policies and priorities. Examining associations between temporal trends in CRF and temporal trends in socioeconomic and health-related indicators could provide further insight into the importance of these indicators and their potential population health implications.

Thus, the present study is a follow-up to several recent studies published using the same dataset.<sup>22–24</sup> However, this study provides a unique aim, which was to systematically analyse international and national temporal trends in the CRF among children and adolescents. The secondary aim was to examine relationships between temporal trends in CRF and temporal trends in broad socioeconomic and health-related indicators across countries. We hypothesised that CRF declined since 1981, with the rate of decline possibly slowing over time, and that temporal trends in income inequality would be inversely associated with country-specific temporal trends in CRF.

## METHODS

### Data sources

A systematic review of the scientific literature was prospectively registered (PROSPERO 2013:CRD42013003622) and

completed to locate studies that reported descriptive 20mSRT data on individuals aged 9–17 years (see Tomkinson *et al*<sup>24</sup> for a detailed description of the search strategy). This review was undertaken according to the Preferred Reporting Items for Systematic Review and Meta-Analysis guidelines for systematic reviews.<sup>25</sup> Briefly, studies were identified up until October 2015 using the following bibliographic databases: the Cochrane Central Register of Controlled Trials, Embase, MEDLINE, PsycINFO and SPORTDiscus. The search strategy included the terms: shuttle run\*, OR beep test, OR multi-stage, OR aerobic, OR cardio\*, OR endurance; with child\*, adolescent\*, pubescent\* boy, girl, young and youth as search term modifiers. No search restriction was placed on language. The reference lists of all included studies and personal libraries of the authors were reviewed to identify relevant studies not identified through the search strategy. Email contact with the corresponding authors of studies occurred when necessary, in order to provide clarification, to avoid ‘double counting’ previously reported data and/or to request additional descriptive or raw data.

### Inclusion/exclusion criteria

Studies were included if descriptive 20mSRT data were reported on apparently healthy (free from known disease/injury) individuals aged 9–17 years at the country–sex–age–year level from 1981 onwards—the inception year of Léger’s 20mSRT 1 min stage protocol.<sup>18</sup> Of the 979 studies identified as relevant, 802

studies were excluded as described in figure 1 (see also Tomkinson and colleagues<sup>24</sup> for a detailed description of the inclusion/exclusion criteria). Descriptive data from the remaining 177 studies were extracted by a single author into a spreadsheet using a standardised template, with data checked and corrected by two authors using procedures reported elsewhere.<sup>24</sup> Only country–sex–age groups that included data across at least two time points spanning a minimum of 5 years were examined. A minimum of five country–sex–age groups (eg, 9-year-old Australian boys) was required per country for inclusion. These two additional steps resulted in the further exclusion of 40 studies, yielding a final dataset of 137 studies (figure 1; online supplementary file 1).

### Data treatment and statistical analysis

All 20mSRT data were expressed using a common protocol and result metric (running speed at the last completed stage, km/hour) using a detailed data standardisation procedure reported elsewhere.<sup>16 24</sup> The accuracy of this data standardisation procedure is excellent, with differences in means calculated using this standardisation procedure and direct calculation from individual final running speeds, <0.5% at the country–sex–age level.<sup>16</sup> CRF was estimated by the widely used Léger<sup>18</sup> prediction equation:

$$\dot{V}O_{2peak} \text{ (mL/kg/min)} = 31.025 + 3.238 \text{ Speed} - 3.248 \text{ Age} + 0.1536 \text{ Speed} \cdot \text{Age}$$

where *Speed* is the running speed of the last completed stage (km/hour) and *Age* is age at last birthday. In a sample of Québec children and adolescents, this equation had an SE of estimate of 5.9 mL/kg/min or 12.1%.<sup>18</sup>

Temporal trends in mean CRF were analysed using an update of the detailed procedure described elsewhere.<sup>17 26</sup> Temporal trends at the country–sex–age level were analysed using best-fitting sample-weighted linear or polynomial (quadratic or cubic) regression models relating the year of testing to CRF. Changes in mean CRF were expressed as absolute (mL/kg/min per year) and per cent (% per year) changes. To interpret the magnitude of change, standardised effect sizes (ES) of 0.2, 0.5 and 0.8 were used as thresholds for small, moderate and large, respectively, with ES <0.2 considered to be negligible and ES ≥0.2 considered to be substantial.<sup>27</sup> Positive changes indicated increases in mean CRF and negative changes indicated declines.

The temporal trends were described as follows: starting with the first year ( $Y_1$ ) covered by any study–country–sex–age group, every group including  $Y_1$  in its span of years was located, with every change ( $dx_i$ , mL/kg/min or % per year) recorded.<sup>17 26</sup> This process was applied to all years for which change data were available ( $Y_1, \dots, Y_n$ ), yielding a series of yearly changes. The poststratified

population-weighted mean yearly change was calculated for year ( $Y_1$ ),<sup>28</sup> which was repeated for  $Y_2, Y_3, Y_4, \dots$  until the last year covered by any study,  $Y_n$ . This process yielded a series of population-weighted mean yearly changes ( $dx_1, \dots, dx_n$ ) that collectively described the temporal pattern of change, a process that was performed for all children and for different sex, age and country groups. Population estimates were standardised to the mean measurement year of 2000 using United Nations' data.<sup>29</sup> The poststratification population-weighting procedure helped to correct the trends for systematic bias associated with oversampling and undersampling and to standardise the trends to underlying country–sex–age-specific demographics. Temporal trends were estimated using best-fitting population-weighted linear or polynomial regression models relating the year of testing to the yearly changes and were graphically illustrated using an iterative procedure described by Tomkinson and Olds.<sup>17</sup>

Relationships between linear temporal trends in CRF and linear temporal trends in broad socioeconomic and health-related indicators across countries were quantified using Pearson's correlation coefficients, with 95% CIs estimated using Fisher's  $z$ -transformation. National trends for three broad socioeconomic/health-related indicators (percentage overweight/obese,<sup>30</sup> percentage physically active,<sup>31</sup> and Gini index<sup>32</sup>; table 1) were analysed using linear regression models (as described above for CRF). To interpret the magnitude of correlation, ES of 0.1, 0.3 and 0.5 were used as thresholds for weak, moderate and strong respectively, with ES <0.1 considered to be negligible and ES ≥0.1 considered to be substantial.<sup>27</sup>

### RESULTS

Temporal trends in CRF were estimated from 965 264 children and adolescents aged 9–17 years from 19 countries (1408 country–sex–age–year groups) between 1981 and 2014 (table 2). These countries represented 17 high-income and 2 upper middle-income countries,<sup>33</sup> from 6 of 7 continents, and approximately 15% of the world's population. National surveys provided 64% of all data points, state/provincial studies 24% and community studies 12% (online supplementary file 1). Trends were calculated for 262 country–sex–age groups (boys: 125; girls: 137; children (aged 9–12 years): 107; adolescents (aged 13–17 years): 155), with a median sample size of 1138 (range: 100–54 567) and a median span of 16 years (range: 5–30).

Collectively, there was a moderate decline in mean CRF between 1981 and 2014 (change in means (95% CI):  $-3.3$  mL/kg/min ( $-3.5$  to  $-3.1$ ) or  $-7.3\%$  ( $-7.8$  to  $-6.7$ )) (figure 2).

**Table 1** Potential correlates of temporal trends in CRF in children and adolescents

Variable	Data source	Description
Overweight/obesity (%)	Ng <i>et al</i> <sup>30</sup> Trend data available for 19 countries between 1990 and 2013.	Calculated as the change (per decade) in mean country-specific percentage of boys and girls aged 2–19 years (age standardised) that classified as overweight and/or obese based on the International Obesity Task Force definition. A positive change indicated an increase in the mean percentage of overweight/obese and a negative change indicated a decline.
Physical activity (%)	Inchley <i>et al</i> <sup>31</sup> Data originally obtained from Health Behaviour in School-aged Children WHO collaborative cross-national study. Trend data available for 12 European countries between 2002 and 2014.	Calculated as the change (per decade) in mean country-specific percentage of boys and girls aged 11, 13 and 15 years old that achieved at least 1 hour of moderate-to-vigorous physical activity per day. A positive change indicated an increase in the mean percentage of physically active children and a negative change indicated a decline.
Gini index	The World Bank <sup>32</sup> Trend data available for 18 countries between 2000 and 2014.	Summarises the change (per decade) in the distribution of income among individuals in a country where 0 represents perfect equality and 100 implies perfect inequality. A positive change indicated a trend towards perfect inequality and a negative change a trend towards perfect equality.

CRF, cardiorespiratory fitness.

Table 2 Summary of the included studies by country

Country	Sex	Ages (years)	Sample size	Country–sex–age–year groups	Span of years
Australia <sup>w1–w12</sup>	Boys+girls	9–16	25 961	101	1988–2010
Belgium <sup>w13–w23</sup>	Boys+girls	9–17	23 358	117	1985–2010
Brazil <sup>w24–w26</sup>	Girls	9–17	2826	24	1998–2006
Canada <sup>w27–w32</sup>	Boys+girls	9–17	29 009	91	1981–2011
Estonia <sup>w21,w33–w38</sup>	Boys+girls	10–17	7906	46	1992–2002
France <sup>w18,w39–w45</sup>	Boys+girls	9–14	5763	32	1985–2007
Greece <sup>w18,w46–w50</sup>	Boys+girls	9–17	268 382	55	1991–2014
Hungary <sup>w18,w21,w51,w52</sup>	Boys+girls	12–17	2455	22	1990–2013
Italy <sup>w18,w53–w58</sup>	Boys+girls	12–17	5218	31	1986–2007
Japan <sup>w59–w75</sup>	Boys+girls	9–17	279 732	306	1998–2014
Lithuania <sup>w34,w35</sup>	Boys+girls	11–17	6479	28	1992–2002
The Netherlands <sup>w76–w78</sup>	Boys+girls	12–16	3457	22	1987–2006
Poland <sup>w79–w82</sup>	Boys+girls	13–17	22 895	19	1992–2007
Portugal <sup>w83–w89</sup>	Boys+girls	9–17	29 857	71	1999–2011
Seychelles <sup>w90,w91</sup>	Boys+girls	11–16	7913	24	1990–2004
South Africa <sup>w92–w99</sup>	Boys+girls	11–16	2668	30	1996–2012
Spain <sup>w18,w100–w112</sup>	Boys+girls	9–17	25 950	151	1985–2010
UK <sup>w113–w126</sup>	Boys+girls	9–16	48 535	116	1986–2014
USA <sup>w127–w137</sup>	Boys+girls	9–17	166 900	122	1995–2013

There was a large collective decline in mean CRF in boys, moderate declines in both children and adolescents and a small decline in girls (figure 2).

Internationally, the decline in mean CRF was not uniform over time, with the rate of decline slowing from 1981 to 2000 and stabilising near zero thereafter (figure 2; table 3). The rate of decline in CRF has diminished from  $-2.2$  mL/kg/min per decade (95% CI  $-2.4$  to  $2.0$ ; ES: small) in the 1980s,  $-1.6$  mL/kg/min per decade (95% CI  $-1.7$  to  $1.5$ ; ES: small) in the 1990s,  $-0.4$  mL/kg/min per decade (95% CI  $-0.5$  to  $0.3$ ; ES: negligible) in the 2000s to  $-0.2$  mL/kg/min per decade (95% CI  $-0.4$  to  $0.0$ ; ES: negligible) in the 2010s. This trend was consistent across different sex and age groups (figure 2; table 3).

Most countries experienced declines in CRF (17/19 or 89%), ranging from large declines in Australia, Canada, France, Hungary, Lithuania, Poland and Seychelles to negligible declines in Belgium, Estonia and Greece (table 3). The increases in Brazil and Japan were small. While most country trends were approximately uniform (linear), figure 3 indicates non-uniform (curvilinear) changes evidenced by a slowing or stabilising of the rate of decline near to the year 2000 for several countries (Australia, Canada, Greece, South Africa and Spain), a shift from declines to increases in Belgium and a shift from increases to declines in the UK. Between-country trends were very strongly related between boys and girls ( $r=0.96$  (95% CI 0.89 to 0.99)) and between children and adolescents ( $r=0.86$  (95% CI 0.66 to 0.95)).

There was a strong negative association between trends in income inequality (Gini index) and trends in CRF, indicating that countries approaching income equality (ie, a reduction in the population spread of income) over the period 2000–2014 had more favourable trends in CRF (ie, improvements or small declines) (figure 4; table 4). Other correlations were negligible to moderate in magnitude and some (eg, percentage overweight/obese) were not always in the expected direction.

## DISCUSSION

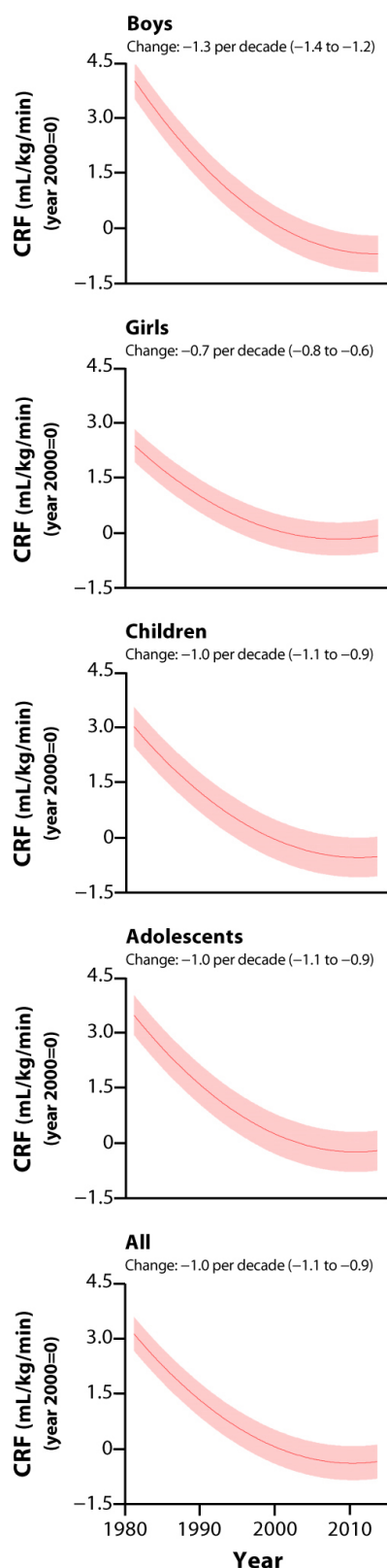
This analysis indicates that since 1981: (1) there has been a substantial international decline in CRF, which has slowed and stabilised with negligible change since 2000; (2) despite most

countries experiencing a decline in CRF, both the rate and pattern of change differed between countries; (3) the decline in CRF has been larger for boys than for girls; and (4) countries approaching income equality demonstrated more favourable trends in CRF. As low CRF in late adolescence and adulthood is significantly associated with all-cause mortality later in life,<sup>11 12</sup> these temporal declines in CRF are therefore suggestive of meaningful declines in population health. This highlights a cause for concern.

## Slowing international decline in CRF

While the declines in CRF observed in the 1980s and 1990s are consistent with those reported in other reviews of temporal trends in CRF,<sup>16 17</sup> this study provides evidence that the international decline in CRF has diminished and stabilised with negligible change since 2000, challenging the popular belief that CRF is still declining in children and adolescents. Temporal trends in field-based CRF are probably caused by trends in a network of environmental, social, behavioural, physical, psychosocial and physiological factors.<sup>13 17 26</sup> Causes of a temporal decline in CRF are a function of changes in  $\dot{V}O_{2peak}$ , mechanical efficiency and fractional utilisation of oxygen, with psychosocial issues (eg, motivation) also important.<sup>34–36</sup> Unfortunately, there are no compelling trend data for these factors. Physiological changes are affected by physical changes, such as increased fatness. There are compelling reasons why increases in fatness will influence declines in field-based CRF (or a stabilisation in fatness will lead to a stabilisation in CRF). First, based on studies using external loading, increased fatness will increase the oxygen cost of running, and therefore reduce running performance for any given absolute aerobic power.<sup>37</sup> Second, cross-sectionally, running performance declines with increasing fatness.<sup>38 39</sup> Third, in many countries, changes in fatness have coincided with changes in CRF.<sup>26 40</sup> There is overwhelming evidence of an international increase in children's fatness over the past 50 years,<sup>41 42</sup> which appears to have stabilised since the mid-to-late 1990s in some high-income countries.<sup>43</sup> This increase and recent stabilisation





**Figure 2** International temporal trends in mean CRF (mL/kg/min) between 1981 and 2014. Note: data were standardised to the year 2000=0 mL/kg/min, with positive values indicating better CRF and negative values poorer CRF; the solid lines represent the international change in mean CRF, and the shaded areas represent the 95% CIs, with upwards sloping lines indicating increases over time and downwards sloping lines declines; mean (95% CI) absolute changes (per decade) are shown at the top of each panel. CRF, cardiorespiratory fitness.

in fitness appears to have coincided with the deceleration and recent stabilisation in CRF trends. Fourth, direct analysis of the causal fitness-fatness connection indicates that increases in fatness explain 35%–70% of the declines in CRF.<sup>38 44</sup>

Other factors, such as a decline in physical activity or an increase in sedentary behaviours, are probably involved.<sup>17</sup> Unfortunately, temporal trends in these behaviours are not clear, because of the difficulty in obtaining accurate measurements and temporal differences in sampling and methodology.<sup>45</sup> Recent reviews of temporal trends in self-report and objective measures of physical activity in children suggested that physical activity levels and sport participation have not changed in recent decades.<sup>45 46</sup> Given that physical fitness assesses an individual's physiological response to their total physical activity profile, temporal trends in CRF could therefore suggest that physical activity levels have declined in the 1980s and 1990s and stabilised thereafter, at least predominantly in high-income and upper-middle-income countries.

Furthermore, it is not clear whether the observed decline in mean CRF has been uniform or skewed across the distribution. Several studies have reported that temporal trends are skewed in the distribution of CRF, with declines in distance running performance larger in children with low CRF than in children with average or high CRF.<sup>40 47</sup> However, temporal trends in skewness are probably an artefact of expressing CRF in running time and are possibly attenuated when expressed in mL/kg/min, which is typically normally distributed and more appropriate for parametric statistical analysis.

### Temporal differences in CRF between countries

Our analysis was largely representative of high-income and upper-middle-income countries that are well along the physical activity and epidemiological transition,<sup>48</sup> which may help explain why CRF has recently stabilised. The plateau in CRF may be associated with an increased consciousness (eg, increased media attention, increased health-related research, social marketing campaigns and policy interventions) of the issues around poor CRF. There have been initiatives at the home, school, community and government levels,<sup>49</sup> and some country-specific evidence showing concurrent improvements in physical activity and CRF.<sup>50</sup> This study examined trends in three possible broad country-specific correlates of trends in CRF in children and adolescents—the distribution of income within a country and country-specific childhood physical activity and overweight/obesity levels.

The Gini index is a population measure of the distribution of income. We observed a strong negative association between trends in income inequality and trends in CRF in children and adolescents across 18 countries; meaning, countries with a widening gap between rich and poor residents had less favourable trends (ie, large declines) in CRF (eg, France, Lithuania and Seychelles). A widening gap between rich and poor residents suggests a trend towards larger subpopulations of poor individuals. Poverty is linked to poor social and health outcomes—one of which is lower CRF levels—including lower physical activity levels, increased obesity levels, lower life expectancy, higher infant mortality, increased risk of cardiovascular and other diseases, impairment of children's growth, mental illness, drug use and social disintegration.<sup>51 52</sup> This finding suggests that policies aimed at reducing the gap between rich and poor might be a suitable population approach to slowing the decline (or stabilising negative trends) in CRF, assuming the observed ecological correlation

**Table 3** National and international temporal trends in mean CRF (per decade) from 965 264 children aged 9–17 years from 19 countries between 1981 and 2014

Group	Absolute changes in mL/kg/min (95% CI)		Per cent changes (95% CI)	
	Pre-2000	Post-2000	Pre-2000	Post-2000
Poland	−7.6 (−8.1 to 7.1)	−2.4 (−2.7 to 2.1)	−17.8 (−18.9 to 16.7)	−5.2 (−5.8 to 4.6)
Lithuania	−5.0 (−5.2 to 4.8)	−5.0 (−5.4 to −4.6)	−11.2 (−11.7 to 10.7)	−11.2 (−12.0 to 10.4)
South Africa	−4.8 (−5.8 to 3.8)	−1.5 (−2.2 to 0.8)	−10.9 (−13.2 to 8.6)	−3.6 (−5.2 to 2.0)
Portugal	−3.7 (−4.7 to 2.7)	−0.8 (−1.1 to 0.5)	−8.0 (−10.0 to 6.0)	−1.7 (−2.4 to 1.0)
Australia	−3.5 (−3.9 to 3.1)	−0.4 (−0.7 to 0.1)	−7.9 (−8.8 to 7.0)	−0.9 (−1.6 to 0.2)
Seychelles	−3.1 (−3.2 to 3.0)	−3.1 (−3.3 to 2.9)	−7.3 (−7.6 to 7.0)	−7.3 (−7.7 to 6.9)
France	−2.6 (−2.9 to 2.3)	−3.4 (−3.5 to 3.3)	−5.4 (−6.1 to 4.7)	−7.9 (−8.2 to 7.6)
Canada	−2.2 (−2.4 to 2.0)	0.4 (0.2 to 0.6)	−4.8 (−5.2 to 4.4)	0.9 (0.6 to 1.2)
Hungary	−1.7 (−1.9 to 1.5)	−1.7 (−1.9 to 1.5)	−4.4 (−5.0 to 3.8)	−4.1 (−4.7 to 3.5)
Greece	−1.2 (−1.4 to 1.0)	0.1 (−0.1 to 0.3)	−3.0 (−3.5 to 2.5)	0.1 (−0.3 to 0.5)
Belgium	−1.1 (−1.4 to 0.8)	2.0 (1.5 to 2.5)	−2.5 (−3.1 to 1.9)	4.2 (3.0 to 5.4)
Spain	−1.1 (−1.3 to 0.9)	−0.3 (−0.5 to 0.1)	−2.7 (−3.1 to 2.3)	−0.7 (−1.1 to 0.3)
Italy	−0.7 (−0.9 to 0.5)	−0.6 (−1.0 to 0.2)	−1.7 (−2.3 to 1.1)	−1.8 (−3.1 to 0.5)
The Netherlands	−0.7 (−0.9 to 0.5)	−0.5 (−0.8 to 0.2)	−1.7 (−2.2 to 1.2)	−1.1 (−1.9 to 0.3)
Estonia	−0.2 (−0.4 to 0.0)	−0.2 (−0.5 to 0.1)	−0.3 (−0.6 to 0.0)	−0.4 (−1.0 to 0.2)
UK	0.2 (0.0 to 0.4)	−2.4 (−2.6 to 2.2)	0.5 (0.0 to 1.0)	−5.2 (−5.6 to 4.8)
USA	0.3 (−0.4 to 1.0)	−1.1 (−1.4 to 0.8)	0.8 (−0.9 to 2.5)	−2.6 (−3.2 to 2.0)
Brazil	0.7 (−0.3 to 1.7)	1.3 (0.8 to 1.8)	1.3 (−1.0 to 3.6)	3.4 (2.1 to 4.7)
Japan	1.9 (1.6 to 2.2)	1.4 (1.3 to 1.5)	3.8 (3.3 to 4.3)	2.8 (2.7 to 2.9)
Boys	−1.9 (−2.0 to 1.8)	−0.6 (−0.7 to 0.5)	−4.2 (−4.5 to 3.9)	−1.4 (−1.7 to 1.1)
Girls	−1.2 (−1.3 to 1.1)	−0.3 (−0.4 to 0.2)	−3.0 (−3.3 to 2.7)	−0.6 (−0.9 to 0.3)
Children (aged 9–12 years)	−1.6 (−1.7 to 1.5)	−0.7 (−0.8 to 0.6)	−3.5 (−3.8 to 3.2)	−1.7 (−1.9 to 1.4)
Adolescents (aged 13–17 years)	−1.6 (−1.7 to 1.5)	−0.1 (−0.2 to 0.0)	−3.8 (−4.1 to 3.5)	−0.3 (−0.5 to −0.1)
All	−1.6 (−1.7 to 1.5)	−0.4 (−0.5 to −0.3)	−3.6 (−3.8 to 3.4)	−0.9 (−1.1 to −0.7)

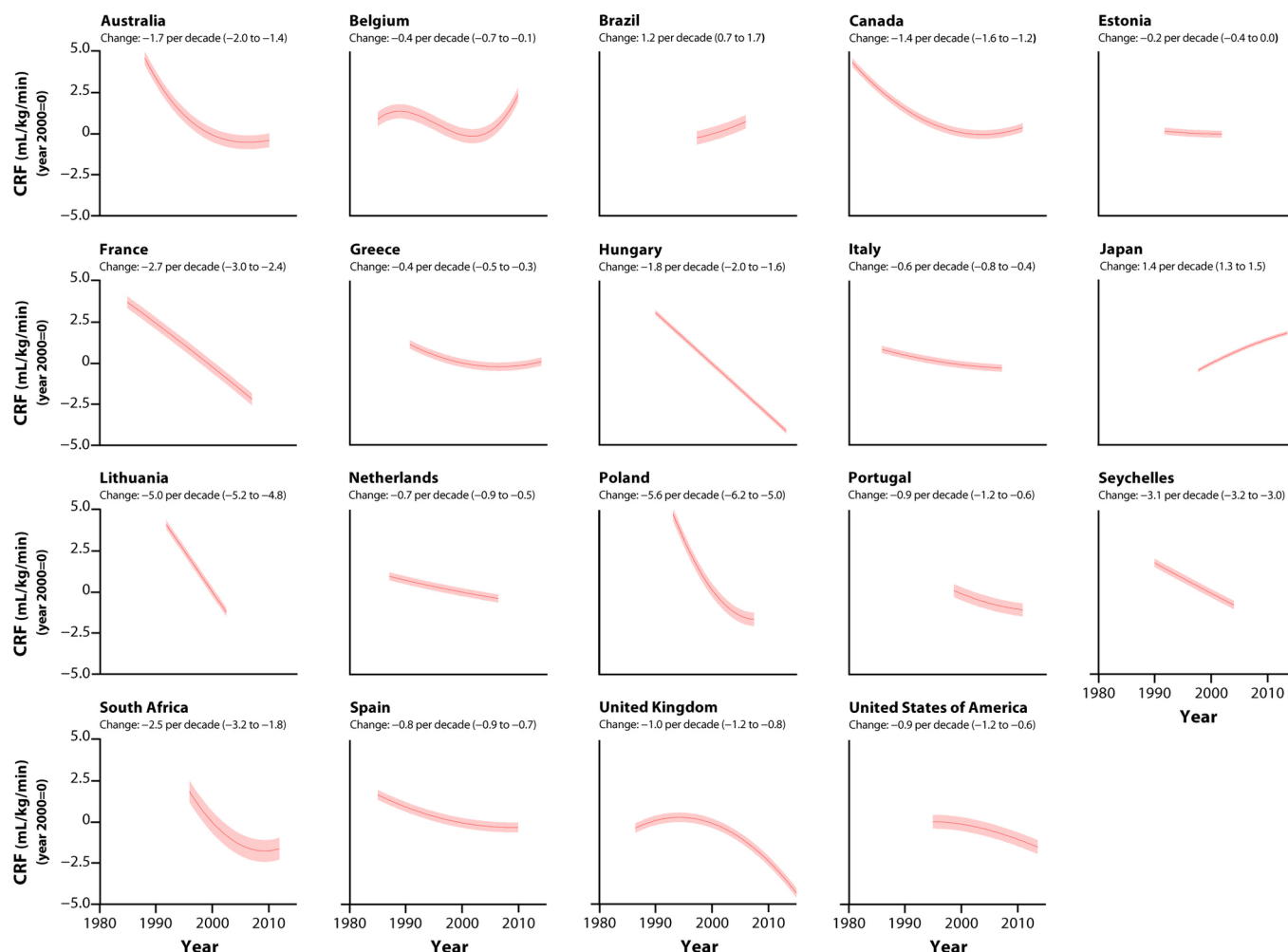
Note: positive changes in means indicate increases in mean CRF and negative values indicate declines.  
CRF, cardiorespiratory fitness.

is causal. Cross-sectionally, country-specific income inequality was a strong negative correlate of CRF across 50 countries<sup>22</sup> and a moderate negative correlate of overall physical activity behaviours across 38 countries.<sup>53</sup> Our results also support previous research that identified income inequality as the strongest structural determinant of health in adolescents.<sup>54</sup>

Because physical activity is considered a modifier of CRF, it was expected that trends in population levels of physical activity would be positively related to trends in CRF in children and adolescents.<sup>55</sup> Trend analysis of validated self-report survey data from the Health Behaviour in School-aged Children (HBSC) WHO collaborative cross-national study<sup>31</sup> suggested a weak positive association between trends in physical activity and trends in CRF in children and adolescents. In other words, countries where the percentage of sufficiently active children increased over the period 2002–2014 tended to have more favourable trends in CRF (eg, Belgium, Estonia and Spain). It was also expected that trends in population levels of overweight/obesity would be negatively associated with trends in CRF in children and adolescents. However, contrary to expectation, there was a moderate positive association between trends in overweight/obesity and trends in CRF prior to 2000, suggesting that countries where the percentage of overweight/obesity increased tended to have more favourable trends in CRF (eg, Brazil, Japan and USA). Post-2000, there was a negligible association between trends in overweight/obesity and trends in CRF. These results may reflect limitations of the HBSC-WHO and the Global Burden of Disease

studies that used self-report measures and a mix of self-report and direct measures, respectively, or that trends in overweight/obesity, physical activity and CRF were generated using different data sets of children and adolescents. Alternatively, it may reflect that trends in overweight/obesity and physical activity levels are, in fact, negligible to moderate correlates of trends in CRF.

Because our analysis is representative of only high-income and upper middle-income countries, it is also possible that our correlation estimates were affected by between-country homogeneity, which would theoretically act to reduce the magnitude of the correlations. This also limits our understanding of the true international trend in CRF and the generalisability of our results to low-income and middle-income countries, making it difficult to confidently provide lessons learnt to low-income and middle-income countries that might be in the midst of a physical activity transition. This highlights the need for low-income and middle-income countries to collect CRF data to track trends in population fitness levels in order to help inform policies to prevent declines like those seen in high-income countries in the 1980s and 1990s. Evidence from one low-income country at least indicated that CRF<sup>56</sup> has declined substantially over the past two decades. Lang *et al* recently suggested establishing an international 20mSRT data repository to help monitor CRF.<sup>22</sup> This type of data repository would be excellent for tracking trends in CRF in low-income and middle-income countries with minimal finances to support other surveillance efforts.



**Figure 3** National temporal trends in mean CRF (mL/kg/min) between 1981 and 2014. Note: data were standardised to the year 2000=0 mL/kg/min, with positive values indicating better CRF and negative values poorer CRF; the solid lines represent the national changes in mean CRF, and the shaded areas represent the 95% CIs, with upwards sloping lines indicating increases over time and downwards sloping lines indicating declines; mean (95% CI) absolute changes (per decade) are shown at the top of each panel. CRF, cardiorespiratory fitness.

### Temporal differences in CRF between sexes

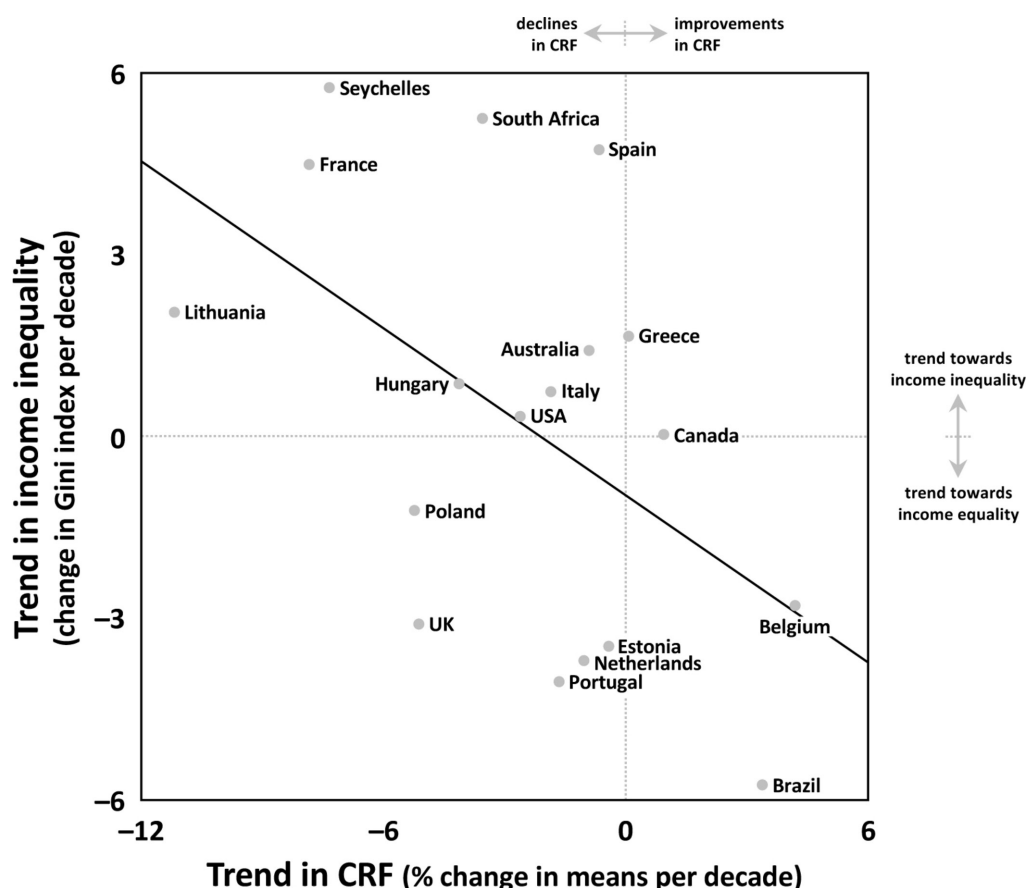
It is not clear why declines in CRF were larger for boys than for girls across the full sample. Olds<sup>41</sup> indicated that increases in percentage body fat were larger for boys (1.0% per decade) than for girls (0.7% per decade) in 30 high-income countries between 1952 and 2003. Cross-sectionally, the negative relationship between fatness (sum of skinfolds) and CRF (20mSRT performance) is stronger for boys than for girls,<sup>39</sup> suggesting that any given increase in fatness will result in a greater decline in boys' CRF. The temporal difference in CRF between sexes may also be a result of a temporal difference in physical activity participation between sexes, which is apparent in elite sport. For example, the 2012 Olympic Games marked the first time a female athlete was part of every competing country's delegation, with females comprising 44% of all athletes, increasing from 23% in 1984 and 11% in 1960.<sup>57</sup> Although this highlights the diminishing gender gap in elite sport, it may reflect that sport participation for girls of all ages has increased internationally. Perhaps the recent promotion of gender equality policies and programmes<sup>58</sup> has helped narrow the gender gap in CRF through sport participation and other physical activity areas. Sex-related differences in motivation levels may also be involved.

It is also possible that the sex-related temporal differences in CRF were the result of our use of the Léger<sup>18</sup> prediction equation.

To examine this, we recalculated trends in CRF using 20mSRT performances (ie, speed (km/hour) at the last completed stage) and estimated  $\dot{V}O_{2peak}$  values from four additional prediction equations<sup>59–61</sup> for individuals aged 12–14 years (the common ages across which all equations were validated) from a single country (Japan, because descriptive data were available for all predictor variables across all time points (annually from 1998 to 2014)). There were similar time-related changes (indicating improvements of similar magnitude in Japanese children as shown in figure 3) and similar (negligible) sex-related differences in trends when calculated using speed values (0.4% per decade), estimated  $\dot{V}O_{2peak}$  values from the Léger equation (0.3% per decade) and estimated  $\dot{V}O_{2peak}$  values from the four additional equations (range: 0.1%–0.3% per decade). It is therefore unlikely that our trends are an artefact of expressing CRF as  $\dot{V}O_{2peak}$  estimated by the Léger equation.

### STRENGTHS AND LIMITATIONS

Using a systematic search and analytical strategy, this study reviewed data from 137 studies on 965 264 children and adolescents from 19 countries to estimate international and national temporal trends in CRF. Although not the first study examining international trends in CRF, it does update previous



**Figure 4** The relationship between linear temporal trends in CRF (% change) and linear temporal trends in income inequality (Gini index) between 2000 and 2014. Note: positive changes in CRF indicate increases in mean CRF and negative changes indicate declines in mean CRF. Positive changes in Gini index indicate trends towards perfect inequality and negative changes indicate trends towards perfect equality. The solid diagonal line represents the regression line. CRF, cardiorespiratory fitness.

comprehensive studies<sup>16 17</sup> by: (1) extending the end of the temporal picture from 2003 to 2014, providing the current best available estimate of temporal trends in CRF; (2) reporting absolute, per cent and standardised trends for a single validated measure; (3) reporting trends in  $\dot{V}O_{2peak}$ , which reflect underlying trends in the energetic cost of exercise; (4) describing trends using weighted regression and a poststratification population weighting procedure; and (5) reporting the temporal trend associations between CRF and broad socioeconomic/health-related indicators. Furthermore, a sensitivity analysis showed that the removal of countries with very large sample sizes (Greece, Japan and USA) had a negligible effect ( $ES < 0.2$ ) on the collective trends in CRF, providing further support that our calculations were not biased by the inclusion of these countries.

There are however several limitations. First, the reported trends are representative of high-income and upper middle-income countries, and it is not known whether similar trends exist for low-income countries that may be experiencing a physical

activity transition.<sup>48</sup> Second, this study pooled data from studies that used different sampling methods (probability and non-probability sampling) and sampling frames (national, state/provincial, and community levels), which raises the issue of representativeness. However, because trends in population-representative samples could not always be estimated, trend estimates across state/provincial and community samples of children were included because they were considered to provide meaningful insight into country-specific trends. Third, differences in testing conditions (eg, climate, altitude, practice and running surfaces) and measurement errors (eg, methodological drift and diurnal variation) might have occurred, although the large number of included data points should have minimised these methodological issues. Future studies should follow the recommendations of Tomkinson *et al*<sup>24</sup> to improve consistency in the reporting of 20mSRT results across studies to assist future data pooling and the update of international and national temporal trends. Fourth, international and national temporal trends were estimated from

**Table 4** Pearson's correlation coefficients (95% CI) between linear temporal trends in CRF and linear temporal trends in socioeconomic and health-related indicators

Indicator	Pre-2000	Post-2000	1981–2014
Overweight/obesity (%)	0.32 (–0.16 to 0.68)	–0.05 (–0.49 to 0.41)	0.24 (–0.24 to 0.63)
Physical activity (%)		0.23 (–0.25 to 0.62)	
Gini index		–0.51 (–0.78 to –0.07)	

CRF, cardiorespiratory fitness.



available country–sex–age–specific trend data, and therefore may not be representative of all country–sex–age groups or all measurement years. Fifth, while  $\dot{V}O_{2peak}$  was estimated using a prediction equation validated on individuals aged 8–19 years,<sup>18</sup> it is not clear whether it was validated across a range of CRF values similar to those estimated from the studies included in this review. Sixth, temporal trends in CRF will be affected by concurrent trends in biological maturation,<sup>62</sup> which generally favour children of the same chronological age in more recent years and may underestimate the true temporal declines.<sup>16</sup>

## CONCLUSION

This study indicates that there has been a substantial decline in CRF in high-income and upper middle-income countries since 1981, which has slowed and stabilised internationally since 2000. While declines in CRF have typically been observed at the national level, variability exists in both the rate and the pattern of change across countries, with countries approaching income equality demonstrating more favourable trends in CRF. Larger declines in CRF were observed for boys than for girls, and while it is not entirely clear why, sex-related temporal differences in physical activity participation may be involved. This study highlights a gap in CRF trend data for low-income and middle-income countries, underscoring the need to improve the international monitoring of CRF across populations because temporal declines are indicative of declines in population health. To most accurately track trends in child and adolescent health, it is recommended that large-scale, harmonised national health and fitness surveys be regularly conducted, especially among low-income and middle-income countries.

### What are the findings?

- This study estimated that there has been a moderate international decline in cardiorespiratory fitness (CRF) between 1981 and 2000, which has slowed and stabilised with negligible change since 2000.
- This study estimated that the decline in CRF was generally larger for boys than for girls and similar for children and adolescents. Trends in CRF also differed in magnitude and direction between countries, with most showing declines.
- This study indicated that countries approaching income equality (ie, a reduction in the population spread of income) have experienced more favourable trends in CRF (ie, improvements or small declines).

### How might it impact on clinical practice in the future?

Temporal trends in the CRF of children and adolescents should provide meaningful insight into trends in population health, highlighting the need to improve the national, regional and international surveillance of CRF.

**Correction notice** This article has been corrected since it published Online First. Reference 11 has been corrected.

**Acknowledgements** We would like to thank the authors of the included studies for generously clarifying details of their studies and/or for providing raw and/or additional data.

**Contributors** All authors developed the research question and designed the study. GRT and JJJ had full access to all the data in the study and take responsibility for the integrity of the data. GRT led the statistical analysis, synthesis of results and writing of the report. All authors contributed to the interpretation of results, editing and critical reviewing of the final report and approved the final report.

**Competing interests** None declared.

**Provenance and peer review** Not commissioned; externally peer reviewed.

© Article author(s) (or their employer(s) unless otherwise stated in the text of the article) 2019. All rights reserved. No commercial use is permitted unless otherwise expressly granted.

## REFERENCES

- 1 Ortega FB, Ruiz JR, Castillo MJ, *et al.* Physical fitness in childhood and adolescence: a powerful marker of health. *Int J Obes* 2008;32:1–11.
- 2 Ross R, Blair SN, Arena R, *et al.* Importance of assessing cardiorespiratory fitness in clinical practice: a case for fitness as a clinical vital sign: a scientific statement from the American Heart Association. *Circulation* 2016;134:e653–699.
- 3 Fletcher GF, Blair SN, Blumenthal J, *et al.* Statement on exercise. benefits and recommendations for physical activity programs for all Americans. A statement for health professionals by the committee on exercise and cardiac rehabilitation of the council on clinical cardiology, American Heart Association. *Circulation* 1992;86:340–4.
- 4 Myers J, Prakash M, Froelicher V, *et al.* Exercise capacity and mortality among men referred for exercise testing. *N Engl J Med* 2002;346:793–801.
- 5 Gulati M, Pandey DK, Arnsdorf MF, *et al.* Exercise capacity and the risk of death in women: the St James Women Take Heart Project. *Circulation* 2003;108:1554–9.
- 6 Lee CD, Blair SN. Cardiorespiratory fitness and stroke mortality in men. *Med Sci Sports Exerc* 2002;34:592–5.
- 7 Sawada SS, Lee IM, Naito H, *et al.* Cardiorespiratory fitness, body mass index, and cancer mortality: a cohort study of Japanese men. *BMC Public Health* 2014;14:1012.
- 8 Katzmarzyk PT, Church TS, Janssen I, *et al.* Metabolic syndrome, obesity, and mortality: impact of cardiorespiratory fitness. *Diabetes Care* 2005;28:391–7.
- 9 Kodama S, Saito K, Tanaka S, *et al.* Cardiorespiratory fitness as a quantitative predictor of all-cause mortality and cardiovascular events in healthy men and women: a meta-analysis. *JAMA* 2009;301:2024–35.
- 10 Eisenmann JC, Wickel EE, Welk GJ, *et al.* Relationship between adolescent fitness and fatness and cardiovascular disease risk factors in adulthood: the Aerobics Center Longitudinal Study (ACLS). *Am Heart J* 2005;149:46–53.
- 11 Höglström G, Nordström A, Nordström P. Aerobic fitness in late adolescence and the risk of early death: a prospective cohort study of 1.3 million Swedish men. *Int J Epidemiol* 2016;45:1159–68.
- 12 Sato M, Kodama S, Sugawara A, *et al.* Physical fitness during adolescence and adult mortality. *Epidemiology* 2009;20:463–4.
- 13 Armstrong N, Tomkinson G, Ekelund U. Aerobic fitness and its relationship to sport, exercise training and habitual physical activity during youth. *Br J Sports Med* 2011;45:849–58.
- 14 Tomkinson G, Olds T. Field tests of fitness. In: Armstrong N, Van Mechelen W, eds. *Paediatric exercise science and medicine*. 2<sup>nd</sup> ed. Oxford United Kingdom: Oxford University Press, 2008. pp.109–28.
- 15 Ruiz JR, Silva G, Oliveira N, *et al.* Criterion-related validity of the 20-m shuttle run test in youths aged 13–19 years. *J Sports Sci* 2009;27:899–906.
- 16 Tomkinson GR, Léger LA, Olds TS, *et al.* Secular trends in the performance of children and adolescents (1980–2000): an analysis of 55 studies of the 20m shuttle run test in 11 countries. *Sports Med* 2003;33:285–300.
- 17 Tomkinson GR, Olds TS. Secular changes in pediatric aerobic fitness test performance: the global picture. *Med Sport Sci* 2007;50:46–66.
- 18 Léger LA, Mercier D, Gadoury C, *et al.* The multistage 20 metre shuttle run test for aerobic fitness. *J Sports Sci* 1988;6:93–101.
- 19 Moliner-Urdiales D, Ruiz JR, Ortega FB, *et al.* Secular trends in health-related physical fitness in Spanish adolescents: the AVENA and HELENA studies. *J Sci Med Sport* 2010;13:584–8.
- 20 Palomäki S, Heikinaro-Johansson P, Huotari P. Cardiorespiratory performance and physical activity in normal weight and overweight Finnish adolescents from 2003 to 2010. *J Sports Sci* 2015;33:588–96.
- 21 Thomas NE, Williams DRR, Rowe DA, *et al.* Evidence of secular changes in physical activity and fitness, but not adiposity and diet, in Welsh 12–13 year olds. *Health Educ J* 2010;69:381–9.
- 22 Lang JJ, Tremblay MS, Léger L, *et al.* International variability in 20 m shuttle run performance in children and youth: who are the fittest from a 50-country comparison? A systematic literature review with pooling of aggregate results. *Br J Sports Med* 2016;bjsports-2016-096224.
- 23 Lang JJ, Tremblay MS, Ortega FB, *et al.* Review of criterion-referenced standards for cardiorespiratory fitness: what percentage of 1 142 026 international children and youth are apparently healthy? *Br J Sports Med* 2017;bjsports-2016-096955.
- 24 Tomkinson GR, Lang JJ, Tremblay MS, *et al.* International normative 20 m shuttle run values from 1 142 026 children and youth representing 50 countries. *Br J Sports Med* 2016;bjsports-2016-095987.
- 25 Moher D, Liberati A, Tetzlaff J, *et al.* Preferred reporting items for systematic reviews and meta-analyses: the PRISMA statement. *PLoS Med* 2009;6:e1000097.

- 26 Tomkinson GR, Macfarlane D, Noi S, *et al.* Temporal changes in long-distance running performance of Asian children between 1964 and 2009. *Sports Med* 2012;42:267–79.
- 27 Cohen J. *Statistical power analysis for the behavioral sciences*. 2<sup>nd</sup> ed. New Jersey: USA Lawrence Erlbaum, 1988.
- 28 Levy PS, Lemeshow S. Stratification random sampling: further issues. In: Levy PS, Lemeshow S, eds. *Sampling of populations: methods and application*. Hoboken, NJ: John Wiley & Sons, Inc, 2008. pp.143–88.
- 29 United Nations, Department of Economic and Social Affairs, Population Division. *World population prospects: The 2015 revision, key findings and advance tables*. New York: United Nations, Department of Economic and Social Affairs, Population Division, 2015.
- 30 Ng M, Fleming T, Robinson M, *et al.* Global, regional, and national prevalence of overweight and obesity in children and adults during 1980–2013: a systematic analysis for the Global burden of disease study 2013. *Lancet* 2014;384:766–81.
- 31 Inchley J, Currie D, Jewell J. Adolescent obesity and related behaviours: trends and inequalities in the WHO European region, 2002–2014. *Observations from the Health Behaviour in School-aged Children (HBSC) WHO collaborative cross-national study*. Copenhagen, Denmark: World Health Organisation, 2017.
- 32 The World Bank. *Gini index* <http://data.worldbank.org/indicator/SI.POV.GINI?end=2010&start=1988>.
- 33 The World Bank. *World Bank country and lending groups* <http://data.worldbank.org/about/country-and-lending-groups> (accessed 24 Dec 2015).
- 34 Krahenbuhl GS, Pangrazi RP, Chomokos EA. Aerobic responses of young boys to submaximal running. *Res Q* 1979;50:413–21.
- 35 Lussier L, Buskirk ER. Effects of an endurance training regimen on assessment of work capacity in prepubertal children. *Ann NY Acad Sci* 1977;301:734–47.
- 36 Sjödin B, Svedenhag J. Applied physiology of marathon running. *Sports Med* 1985;2:83–99.
- 37 Cureton KJ, Sparling PB, Evans BW, *et al.* Effect of experimental alterations in excess weight on aerobic capacity and distance running performance. *Med Sci Sports* 1978;10:194–9.
- 38 Olds T, Dollman J. Are changes in distance-run performance of Australian children between 1985 and 1997 explained by changes in fatness? *Pediatr Exerc Sci* 2004;16:201–9.
- 39 Olds TS, Ridley K, Tomkinson GR. Declines in aerobic fitness: are they only due to increasing fatness? *Med Sport Sci* 2007;50:226–40.
- 40 Dollman J, Olds T, Norton K, *et al.* The evolution of fitness and fatness in 10–11-year-old Australian school children: changes in distributional characteristics between 1985 and 1997. *Pediatr Exerc Sci* 1999; 11:108–21.
- 41 Olds TS. One million skinfolds: secular trends in the fatness of young people 1951–2004. *Eur J Clin Nutr* 2009;63:934–46.
- 42 Wang Y, Lobstein T. Worldwide trends in childhood overweight and obesity. *Int J Pediatr Obes* 2006;1:11–25.
- 43 Olds T, Maher C, Zumin S, *et al.* Evidence that the prevalence of childhood overweight is plateauing: data from nine countries. *Int J Pediatr Obes* 2011;6:342–60.
- 44 Albon HM, Hamlin MJ, Ross JJ. Secular trends and distributional changes in health and fitness performance variables of 10–14-year-old children in New Zealand between 1991 and 2003. *Br J Sports Med* 2010;44:263–9.
- 45 Ekelund U, Tomkinson G, Armstrong N. What proportion of youth are physically active? Measurement issues, levels and recent time trends. *Br J Sports Med* 2011;45:859–65.
- 46 Booth VM, Rowlands AV, Dollman J. Physical activity temporal trends among children and adolescents. *J Sci Med Sport* 2015;18:418–25.
- 47 McNaughton L, Morgan R, Smith P, *et al.* An investigation into the fitness levels of Tasmanian primary schoolchildren. *ACHPER Healthy Lifestyles J* 1996;43:4–10.
- 48 Katzmarzyk PT, Mason C. The physical activity transition. *J Phys Act Health* 2009;6:269–80.
- 49 Heath GW, Parra DC, Sarmiento OL, *et al.* Evidence-based intervention in physical activity: lessons from around the world. *Lancet* 2012;380:272–81.
- 50 Hardy LL, Okely AD, Dobbins TA, *et al.* Physical activity among adolescents in New South Wales (Australia): 1997 and 2004. *Med Sci Sports Exerc* 2008;40:835–41.
- 51 Elgar FJ, Pfortner TK, Moor I, *et al.* Socioeconomic inequalities in adolescent health 2002–2010: a time-series analysis of 34 countries participating in the health behaviour in school-aged children study. *Lancet* 2015;385:2088–95.
- 52 Wilkinson R, Pickett K. *The spirit level: Why more equal societies almost always do better*. London: Allen Lane, 2009.
- 53 Tremblay MS, Barnes JD, González SA, *et al.* Global matrix 2.0: Report card grades on the physical activity of children and youth comparing 38 countries. *J Phys Act Health* 2016;13:S343–S366.
- 54 Viner RM, Ozer EM, Denny S, *et al.* Adolescence and the social determinants of health. *The Lancet* 2012;379:1641–52.
- 55 Parikh T, Stratton G. Influence of intensity of physical activity on adiposity and cardiorespiratory fitness in 5–18 year olds. *Sports Med* 2011;41:477–88.
- 56 Dos Santos FK, Prista A, Gomes TN, *et al.* Secular trends in physical fitness of Mozambican school-aged children and adolescents. *Am J Hum Biol* 2015;27:201–6.
- 57 International Olympic Committee. IOC factsheet women in the olympic movement—updated January 2016.. 2016 [http://www.olympic.org/Documents/Reference\\_documents\\_Factsheets/Women\\_in\\_Olympic\\_Movement.pdf](http://www.olympic.org/Documents/Reference_documents_Factsheets/Women_in_Olympic_Movement.pdf) (accessed aug 28 2016).
- 58 UN Development Goals and Beyond 2015. Goal 5 Achieve gender equality and empower all women and girls.. 2015 <http://www.un.org/sustainabledevelopment/gender-equality/> (accessed 28 Aug 2016).
- 59 Barnett A, Chan LNS, Bruce ICC, *et al.* A preliminary study of the 20-m multistage shuttle run as a predictor of peak VO<sub>2</sub> in Hong Kong Chinese students. *Pediatr Exerc Sci* 2006;3:S34–S46.
- 60 Matsuzaka A, Takahashi Y, Yamazoe M, *et al.* Validity of the multistage 20-m shuttle-run test for Japanese children, adolescents, and adults. *Pediatr Exerc Sci* 2004;16:113–25.
- 61 Mahar MT, Welk GJ, Rowe DA, *et al.* Development and validation of a regression model to estimate VO<sub>2</sub> peak from PACER 20-m shuttle run performance. *Journal of Physical Activity and Health* 2006;3:S34–S46.
- 62 Malina RM. Secular trends in growth, maturation and physical performance: a review. *Anthropological Review* 2004;67:3–31.