

# Blood flow restriction training in clinical musculoskeletal rehabilitation: a systematic review and meta-analysis

Luke Hughes,<sup>1</sup> Bruce Paton,<sup>2</sup> Ben Rosenblatt,<sup>3</sup> Conor Gissane,<sup>1</sup> Stephen David Patterson<sup>1</sup>

<sup>1</sup>School of Sport, Health and Applied Science, St. Mary's University, London, UK

<sup>2</sup>Institute of Sport, Exercise and Health, University College London, London, UK

<sup>3</sup>The Football Association, St. George's Park, Burton-Upon-Trent, UK

## Correspondence to

Luke Hughes, School of Sport, Health and Applied Science, St. Mary's University, Waldegrave Road, Twickenham, London TW1 4SX, UK; [luke.hughes@stmarys.ac.uk](mailto:luke.hughes@stmarys.ac.uk)

Accepted 13 January 2017

Published Online First

4 March 2017

## ABSTRACT

**Background and objective** Low-load exercise training with blood flow restriction (BFR) can increase muscle strength and may offer an effective clinical musculoskeletal (MSK) rehabilitation tool. The aim of this review was to systematically analyse the evidence regarding the effectiveness of this novel training modality in clinical MSK rehabilitation.

**Design** This is a systematic review and meta-analysis of peer-reviewed literature examining BFR training in clinical MSK rehabilitation (Research Registry; [researchregistry91](http://researchregistry91)).

**Data sources** A literature search was conducted across SPORTDiscus (EBSCO), PubMed and Science Direct databases, including the reference lists of relevant papers. Two independent reviewers extracted study characteristics and MSK and functional outcome measures. Study quality and reporting was assessed using the Tool for the Assessment of Study quality and reporting in EXercise.

**Eligibility** Search results were limited to exercise training studies investigating BFR training in clinical MSK rehabilitation, published in a scientific peer-reviewed journal in English.

**Results** Twenty studies were eligible, including ACL reconstruction (n=3), knee osteoarthritis (n=3), older adults at risk of sarcopenia (n=13) and patients with sporadic inclusion body myositis (n=1). Analysis of pooled data indicated low-load BFR training had a moderate effect on increasing strength (Hedges'  $g=0.523$ , 95% CI 0.263 to 0.784,  $p<0.001$ ), but was less effective than heavy-load training (Hedges'  $g=0.674$ , 95% CI 0.296 to 1.052,  $p<0.001$ ).

**Conclusion** Compared with low-load training, low-load BFR training is more effective, tolerable and therefore a potential clinical rehabilitation tool. There is a need for the development of an individualised approach to training prescription to minimise patient risk and increase effectiveness.

## INTRODUCTION

Muscle weakness is highly prevalent among the most clinical musculoskeletal (MSK) conditions worldwide. The degenerative effects of muscle atrophy can be seen with both acute and chronic MSK injuries that result in prolonged treatment or muscle immobilisation, such as fractures and ligament injuries.<sup>1</sup> Loss of strength is a major risk factor for osteoarthritis (OA),<sup>2,3</sup> the most common MSK disease responsible for reduced function<sup>3</sup> and quality of life of sufferers,<sup>4</sup> affecting around

250 million adults worldwide<sup>5</sup> with a prevalence correlating with the increasing age of the population.<sup>6</sup> Muscle weakness is increasingly evident in non-injured healthy populations such as older adults due to sarcopenia. This describes a loss of physical function due to the decrease in muscle mass and strength,<sup>7</sup> vascular function<sup>8</sup> and bone mineral density<sup>9</sup> that occur with ageing. Sarcopenia appears to be underpinned by the reduced sensitivity of ageing muscle to anabolic stimuli such as resistance exercise.<sup>10</sup> The consequences of progressive and injury-related loss of muscle strength can be life changing. Strength training is indispensable in clinical MSK rehabilitation, and clinicians are faced with the task of turning the growing body of research into effective clinical practice. For instance, greater quadriceps strength has been linked to a lower risk of symptomatic knee OA<sup>11</sup> and reduced joint space narrowing,<sup>12</sup> as well as reduced pain and positive changes in physical function.<sup>13</sup> Heavy-load resistance training has been advocated to offset age-related loss in muscle strength and mass,<sup>14</sup> and strength training post-immobilisation is essential to regain the strength lost as a result of muscle disuse atrophy.

Historically, heavy exercise loads of approximately 70% of an individual's one repetition maximum (1RM) have been deemed necessary to elicit muscle hypertrophy and strength gains.<sup>15</sup> Recent research has demonstrated that low-load training to failure can stimulate muscle hypertrophy comparable in magnitude to that observed with heavy-load training after 6<sup>16</sup> and 8<sup>17</sup> weeks of training three times per week. However, strength adaptations were maximised with heavy-load training,<sup>16,17</sup> and cross-sectional comparisons would suggest that hypertrophy and strength gains observed with low-load training are not as great as those achieved with heavy-load training.<sup>18</sup> Nevertheless, from a clinical MSK rehabilitation perspective, training to muscular failure may provide one strategy to maximise hypertrophy when training using low loads in situations when using heavy loads is not feasible. Training with low loads may therefore be useful, as the early addition of muscle mass and function in rehabilitation may be beneficial for individuals who have suffered from atrophy.

In recent years, research has demonstrated that augmentation of low-load resistance training with blood flow restriction (LL-BFR) to the active musculature can produce significant hypertrophy and strength gains,<sup>19–22</sup> using loads as low as 30%

Protected by copyright, including for uses related to text and data mining, AI training, and similar technologies.

Br J Sports Med: first published as 10.1136/bjsports-2016-097071 on 4 March 2017. Downloaded from <http://bjsm.bmj.com/> on May 23, 2025 at Department GEZ-LTA ErasmusHogeschool.



CrossMark

**To cite:** Hughes L, Paton B, Rosenblatt B, et al. *Br J Sports Med* 2017;**51**:1003–1011.

1RM.<sup>23</sup> BFR training has been found to yield hypertrophy responses comparable to that observed with heavy-load resistance training;<sup>24</sup> however, studies with such findings regarding muscle hypertrophy are not common among the present literature. Physiological adaptations in leg strength<sup>25</sup> and vascular<sup>26</sup> and pulmonary<sup>27</sup> components have been reported with low-load aerobic exercise and BFR. From a mechanistic standpoint, it is hypothesised that an ischaemic and hypoxic muscular environment is generated during BFR to cause high levels of metabolic stress, alongside mechanical tension when BFR is used in tandem with exercise. Both metabolic stress and mechanical tension have been described as 'primary hypertrophy factors'<sup>28</sup> and theorised to activate other mechanisms for the induction of muscle growth. These proposed mechanisms include: elevated systemic hormone production,<sup>29–30</sup> cell swelling,<sup>31</sup> production of reactive oxygen species (ROS),<sup>32–33</sup> intramuscular anabolic/anticatabolic signalling<sup>34–36</sup> and increased fast-twitch fibre recruitment.<sup>37–39</sup> However, at present these are mainly hypothetical and theoretical-based associations. Pragmatic and specific identification of these proposed mechanisms, including their magnitude of involvement and actual source of activation in BFR-induced hypertrophy is currently lacking and requires further exploration.

Nevertheless, these findings have important implications for individuals who cannot tolerate the mechanical stress of heavy-load exercise.<sup>40</sup> LL-BFR strength training may be a clinically relevant MSK rehabilitation tool as it does not require the high joint forces associated with heavy-load exercise. Interest in the use of BFR training as a clinical rehabilitation tool is mounting,<sup>26–41–42</sup> given the practicality that this training mode may offer in a clinical setting. To date, the effectiveness of LL-BFR training in clinical MSK rehabilitation has not been examined. It also remains unclear whether emerging research is informed by evidenced-based guidelines of implementing this novel training method to ensure safety and validity of findings.<sup>43–44</sup>

The main aims of this review were to conduct a meta-analysis to examine the effectiveness of LL-BFR training in clinical MSK rehabilitation, and a systematic analysis to examine study quality and reporting with a focus on safe and effective application of BFR. Thus, the objectives of this review were to (1) compare the effectiveness of LL-BFR training to both low- and heavy-load training without BFR; (2) systematically review studies examining LL-BFR training in clinical MSK rehabilitation and (3) from the results of the systematic analysis, examine and provide recommendations regarding safe and effective implementation of BFR training in clinical musculoskeletal rehabilitation.

## METHODS

### Search strategy

This review was registered on the Research Registry database (reviewregistry91) and composed according to the Preferred Reporting Items for Systematic Reviews and Meta-analyses (PRISMA) guidelines.<sup>45</sup> A literature search to identify research papers examining BFR training in clinical MSK rehabilitation was carried out on the following databases for the time period of 1st January 1990 to 31st March 2016: SPORTDiscus (EBSCO), PubMed and Science Direct. The title and abstract of each study was screened; exercise training studies utilising BFR as a clinical MSK rehabilitation tool were selected. The reference list of relevant papers was also examined. The exact search terms were: 'blood flow restriction' OR 'vascular occlusion' OR 'kaatsu' AND 'strength training' OR 'resistance training' OR 'exercise training'. This study received approval from the University's ethics committee.

### Inclusion and exclusion criteria

Exercise training studies involving individuals with a clinical MSK condition, published in English in a scientific peer-reviewed journal were included in the analysis. Studies were required to include BFR concurrently with exercise training. Only randomised controlled trials comparing LL-BFR training to either a low-load or high-load protocol without BFR were included in the meta-analysis. Any acute studies, case studies, single-arm studies or those not published in a scientific peer-reviewed journal in English were excluded from meta-analysis.

### Study selection and data extraction

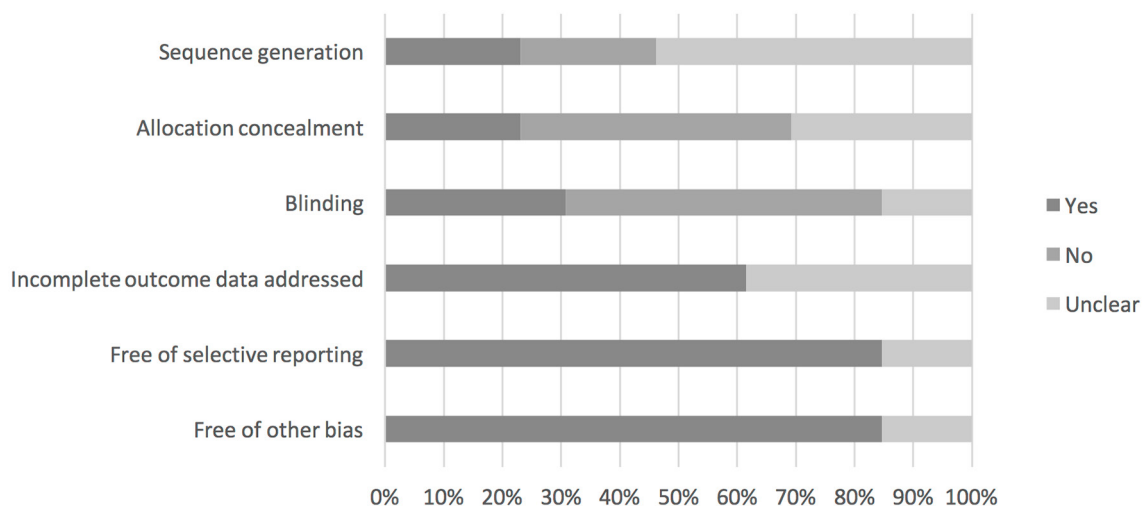
Studies were initially screened independently by two reviewers (LH and SDP) and those failing to match the inclusion criteria and any duplicates were excluded. From the remaining eligible papers, data were recorded relating to (1) study design; (2) clinical population characteristics; (3) rehabilitation protocol: type, frequency, occlusion characteristics, training load and duration of BFR training and (4) outcome measure: muscle strength and size, physical function and pain. Data regarding the safety of BFR implementation were obtained from the systematic analysis of the studies. Data were extracted using a custom spreadsheet composed by LH and SDP. For the meta-analysis, two comparisons were made: (1) LL-BFR training versus a matched protocol without occlusion and (2) LL-BFR training versus heavy-load training. Due to limited data regarding muscle size and physical function, the focus of the meta-analysis was on muscle strength. Risk of bias (figure 1) was calculated according to the Cochrane Collaboration guidelines.<sup>46</sup>

### Meta-analysis

Data analysis was performed by one author (LH) and reviewed by a statistician (CG). Data were extracted in the form of mean, SD and sample size for the meta-analysis. When insufficient raw data were provided, authors were contacted to provide raw data, or means and SDs were extrapolated from figures. Effect sizes were set at <0.40=small, 0.40–0.70=moderate and >0.70=large.<sup>47</sup> All meta-analyses were conducted with the Comprehensive Meta-Analysis software V.2.2.064 (Biostat, Englewood, New Jersey, USA). Pooled data were analysed with a fixed-effect model to determine heterogeneity between studies using the  $I^2$  statistic, which determines the percentage of variability in effect estimates that is due to heterogeneity. Hedges'  $g$  and 95% CI were used to calculate standardised mean differences for trials with sufficient data available. Significance level was set *a priori*  $p < 0.05$ .

### Study quality and reporting

Individual studies were assessed using the 'Tool for assessment of study quality and reporting in exercise' (TESTEX).<sup>48</sup> TESTEX is a 15-point assessment scale, consisting of five available points for study quality and 10 for study reporting. For study quality, a point is awarded for: (1) eligibility criteria specification; (2) randomisation specification; (3) group allocation concealment; (4) presentation of baseline characteristics with no group differences and (5) blinding of an assessor to at least one primary outcome measure. For study reporting, points are awarded for: (1) at least 85% patient adherence; (2) reporting of adverse events; (3) reporting of exercise attendance; (4) intention-to-treat analysis; between-group statistical comparisons for a (5) primary and (6) secondary outcome measure; (7) use of point estimates; (8) control group activity is controlled and presented; (9) adjustment of exercise load and (10) if exercise volume and



**Figure 1** Analysis of risk of bias according to Cochrane Collaboration guidelines.<sup>46</sup>

energy expenditure can be calculated. Data concerning reporting of adverse events and adjustment of exercise load, along with occlusive pressures, were used to address aim three of examining the safety and effectiveness of BFR implementation. Higher scores reflect better study quality and reporting. Any discrepancies in scores between reviewers were resolved by a third party (CG).

## RESULTS

The database search yielded 1502 articles. After initial title and abstract screening, 171 were assessed for eligibility. Regarding clinical MSK conditions, a total of 30 articles were identified, including 20 exercise training studies, 6 exercise training case studies and 4 acute studies. From this selection, 20 and 13 studies were included in the final systematic and meta-analyses, respectively (figure 2). An overview of the studies is summarised in table 1. The main findings from the risk of bias assessment was that the majority of studies could not blind participants or conceal group allocation, and sequence generation was largely unclear (figure 1).

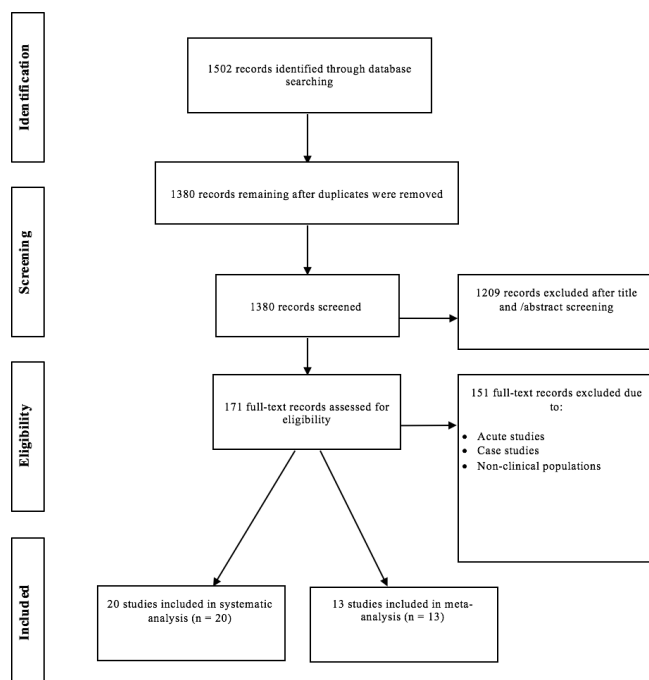
## Meta-analysis

Eight studies meeting the inclusion criteria and comparing LL-BFR training to the same training without BFR had data extracted for meta-analysis. LL-BFR training had a moderate effect on increasing muscle strength in individuals suffering MSK weakness (Hedges'  $g=0.523$ , 95% CI 0.263 to 0.784,  $p<0.001$ ; figure 3). The  $I^2$  statistic of 49.8% represented moderate heterogeneity in the results. Five studies had data extracted for meta-analysis comparing LL-BFR training to heavy-load training. Heavy-load training had a moderate effect on increasing muscle strength compared with LL-BFR training (Hedges'  $g=0.674$ , 95% CI 0.296 to 1.052,  $p<0.001$ ; figure 4). The  $I^2$  statistic revealed minimal heterogeneity in the results (0%).

## Clinical populations and BFR training interventions

Studies involved individuals with knee OA<sup>41 49 50</sup> ( $n=3$ ), ligament injuries<sup>42 51 52</sup> ( $n=3$ ), sporadic inclusion body myositis<sup>53</sup> ( $n=1$ ) and older adults susceptible to sarcopenia<sup>26 27 54-64</sup> ( $n=13$ ). The average age was  $58 \pm 14$  years for a sample range of 10–41 participants. BFR was used in combination with low-load resistance training,<sup>41 49 50 53 55 57 59 63 64</sup> elastic band resistance training<sup>60 61</sup>

and low-moderate intensity walk training.<sup>26 27 56 58 62</sup> BFR training was also used in conjunction with body weight exercises<sup>42 52 54</sup> and individually without any exercise.<sup>51</sup> BFR exercise training load ranged from 10% to 30% 1RM for resistance exercise, and 45% of heart rate reserve to 67  $\text{m/min}^{-1}$  for aerobic and walking exercise. BFR was achieved using either pneumatic cuffs, hand-pumped blood pressure cuffs or elastic wraps ranging from 3 to 18 cm in width. Occlusive pressure across studies ranged from 60 to 270 mmHg. Studies either selected a pressure based on previous research, on total limb occlusive pressure or on systolic blood pressure. The duration of the BFR training intervention ranged from 2 to 16 weeks, with a frequency of 2 to 6 training sessions per week. Some studies did repeated sessions on the same day when BFR was used in isolation<sup>51</sup> and in combination with simple muscle exercises.<sup>52</sup>



**Figure 2** Flow chart of study selection process.

**Table 1** Overview of studies included in the systematic and meta-analyses

Study	Clinical focus	Study design	Method	Occlusion pressure/ cuff width	Duration	Physiological adaptations	Physical function
Mattar <i>et al</i> <sup>63</sup>	Polymyositis and dermatomyositis	Prospective, longitudinal, quasiexperimental	4 weeks of 4 × 15 reps of bilateral leg press and knee extension exercises with BFR at 30% 1RM, 2 days/week, then 8 weeks of 5 × 15 reps, 2 days/week	70% LOP/17.5 cm	12 weeks	↑19.6% and 25.2% in maximal dynamic strength for leg press and knee extension, respectively ↑14.57% in quadriceps CSA	↑15.1% in timed stands ↑4.5% in TUG Improvements in all SF-36 subscales and VAS (p<0.05)
Yokokawa <i>et al</i> <sup>64</sup>	Elderly	Randomised controlled trial	A combination of six different body weight movements for 45 min	70–150 mm Hg/ 4.5 cm	8 weeks	↓20.4% and 6.9% in left and right leg knee extension, respectively ↓15.1% and 4.1% in left and right hand grip power, respectively	↓12.1% in reaction time ↓15.3% in TUG ↓9.4% 10 m walking time ↓9.4% in functional reach test ↓15.5% and 8.7% in left and right maximum step distance, respectively ↓7.2% and ↓34.1% in left and right leg standing time with open eye
Karabulut <i>et al</i> <sup>65</sup>	Elderly men	Randomised controlled trial	Three sets (30, 15, 15 reps) of leg press and knee extensions at 20% 1RM with BFR, 3 days/week	16–240 mm Hg/ 5 cm	6 weeks	↑19.3% leg press strength ↑19.1% leg extension strength	Not assessed
Abe <i>et al</i> <sup>66</sup>	Elderly	Randomised controlled trial	20 min treadmill walking with BFR at 67 ml/min on 5 days/week	160–200 mm Hg/NA	6 weeks	↑11% and 7%–16% in isometric and isokinetic knee extension and flexion torques, respectively ↑5.8% and 5.1% in CSA of thigh and lower leg, respectively ↑6.0% and 10.7% in muscle mass for total mass and thigh mass, respectively	Significant improvements in TUG and chair stand performance (p<0.05)
Patterson and Ferguson <sup>67</sup>	Elderly	Randomised controlled trial	Three sets of single-leg plantar flexion to failure at 25% 1RM	110 mm Hg/10 cm	4 weeks	↑13.5% 1RM ↑17.6% MVC ↑ isokinetic torque of 15.6% (0.52 rad/s); 11.3% (1.05 rad/s); 9.8% (2.09 rad/s; no change in R <sub>ref</sub> ) ↑ PO <sub>ref</sub>	Not assessed
Ozaki <i>et al</i> <sup>68</sup>	Elderly	Controlled trial	20 min treadmill walking with BFR at 45% of HR reserve, 4 days/week	140–200 mm Hg/ 5 cm	10 weeks	↑115% maximum knee joint strength ↑ 3% thigh muscle CSA ↑ 50% carotid arterial compliance	↓ 10.7% in TUG ↑ 20.5% in chair stand test
Ozaki <i>et al</i> <sup>67</sup>	Elderly women	Randomised controlled trial	20 min treadmill walking with BFR at 45% of HR reserve, 4 days/week	140–200 mm Hg/ 5 cm	10 weeks	↑ 3.1% and 3.7% in thigh muscle CSA and volume, respectively ↑ 5.9% MVC ↑ 22% isokinetic strength Increased VO <sub>2peak</sub> (p < 0.05)	Not assessed
Iida <i>et al</i> <sup>68</sup>	Elderly	Randomised controlled trial	20 min treadmill walking with BFR at 67 ml/min for 5 days/week	140–200 mm Hg/NA	6 weeks	↑ 19.5% leg venous compliance, ↑ 21.3% MVO, ↑ 1.2% leg girth	Not assessed
Karabulut <i>et al</i> <sup>69</sup>	Elderly	Randomised controlled trial	Three sets (30, 15, 15) of leg press and knee extension at 20% 1RM, and three sets of upper body exercises (three sets, eight reps) at 80% 1RM, 3 days/week	60–240 Hg/5 cm	6 weeks	↑ 1.3% muscle CSA ↓ 2.7 thigh fat CSA No significant increases in inflammatory or muscle damage markers or testosterone, IGF-1 or IGFBP-3 (p<0.05)	Not assessed
Thiebaud <i>et al</i> <sup>60</sup>	Elderly/Post-menopausal women	Quasi experimental	Three sets (30, 15, 15) of lower body exercises and upper body exercises with BFR using an elastic band at ~10%–30% 1RM, 3 days/week	80–120 mm Hg/ 3 cm	8 weeks	↑ 14.6% chest press 1RM ↑ 5.9% seated row 1RM ↑ 5.3% shoulder press 1 RM ↑ muscle thickness of pectoralis major (p<0.05)	Not assessed
Yasuda <i>et al</i> <sup>61</sup>	Elderly	Controlled trial	Four sets (30, 15, 15, 15) of arm curls and tricep pull down exercises with BFR using an elastic band, 2 days/week	180–270 mm Hg/ 3 cm	12 weeks	↑ 17.6% and 17.4% in CSA of elbow flexors and extensors, respectively ↑ 7.8% and 16.1% in elbow flexion and extension MVIC, respectively No significant changes in haemodynamic parameters or muscle damage markers (CK)	Not assessed

Continued

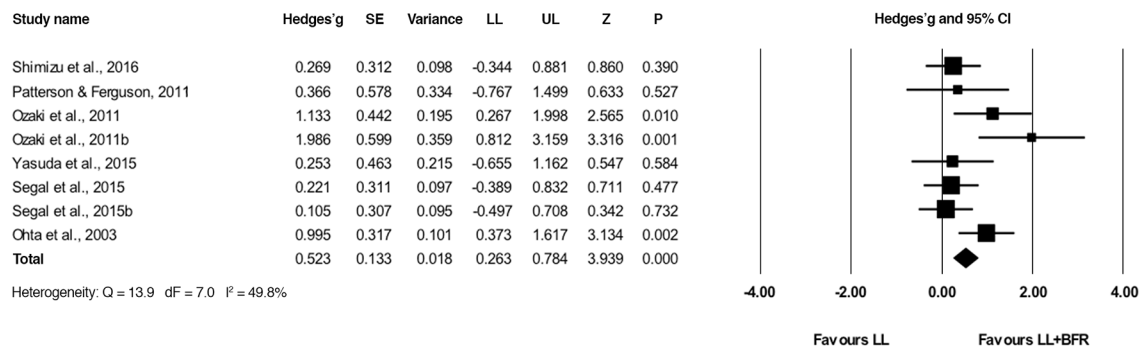
Protected by copyright, including for uses related to text and data mining, AI training, and similar technologies.



Table 1 Continued

Study	Clinical focus	Study design	Method	Occlusion pressure/ cuff width	Duration	Physiological adaptations	Physical function
Vechin <i>et al</i> <sup>62</sup>	Elderly	Randomised controlled trial	Four sets (30, 15, 15, 15) of leg press with BFR at 20% 1RM for 6 weeks, then 30% 1RM for 6 weeks, 2 days/week	50% LOP/18	12 weeks	↑ 17% leg press 1RM ↑ 6.6% quadriceps CSA	Not assessed
Libardi <i>et al</i> <sup>63</sup>	Elderly	Randomised controlled trial	Four sets (30, 15, 15, 15) of leg press with BFR at 20% 1RM 2 days/week for 6 weeks, then 30% 1RM for 6 weeks. Subjects also did 30 40 min walking/running at 50%–80% VO <sub>2</sub> peak, 2 days/week for 6 weeks	50% LOP/17.5 cm	12 weeks	↑ 7.6% in quadriceps CSA ↑ 35.4% 1RM ↑ 10.3% VO <sub>2</sub> peak	Not assessed
Shimizu <i>et al</i> <sup>64</sup>	Elderly	Randomised controlled trial	3×20 reps of leg press, leg extension, rowing and chest press at 20% 1RM with BFR once a day, 3 days/week	Systolic blood pressure/10 cm	4 weeks	↑ 500% lactate ↑ 55% NE ↑ 42% VEGF ↑ 244% GH ↑ 11% RHI ↑ 10% foot-tcPO <sub>2</sub> M ↓ 11% vWF (All p<0.001)	Not assessed
Segal <i>et al</i> <sup>41</sup>	Symptomatic risk factors of knee osteoarthritis (women)	Randomised, double-blinded, controlled trial	Four sets (30, 15, 15, 15) of leg press, 3× per week at 30% 1RM either alone or with BFR, 3 days/week	160–200 mm Hg/ 6.5 cm	4 weeks	Significant ↑ (28.3 kg) in isotonic 1RM Significant ↑ in isokinetic knee extensor strength scaled to body mass Significant ↑ (0.62 W) in scaled 40% 1RM leg press power ↑ (1.3%) in quadriceps volume	↑ (29.3 W) in stair climb power No significant (2.0) increase in knee pain score (KOOS)
Segal <i>et al</i> <sup>49</sup>	Symptomatic risk factors of knee osteoarthritis (men)	Randomised, double-blinded, controlled trial	Four sets (30, 15, 15, 15) of leg press, 3× per week at 30% 1RM either alone or with BFR, 3 days/week	160–200 mmHg/6.5 cm	4 weeks	↑ 3.1% in isotonic leg press 1RM (p=0.003) ↑ 0.4% isokinetic knee extensor strength (p=0.883)	Non-significant (4.9%) change in KOOS pain score (p=1.55)
Fernandes-Bryk <i>et al</i> <sup>60</sup>	Knee osteoarthritis	Randomised, blinded, clinical trial	3 × 20 reps of seated knee extensions at 30% 1RM, 3 days/week. Subjects also performed regular stretching	200 mm Hg/NA	6 weeks	↑ 72% quadriceps strength Lower NPRS knee pain score during exercise compared with highload (2.5 vs 6.2, respectively)	Higher level of function: ↓ 43% and ↓, 16% in Lequesne and TUG test scores, respectively (p<0.05) Less pain: ↓ 51% NPRS score
Takarada <i>et al</i> <sup>61</sup>	Patients with ACLR	Controlled trial	5 × 5 min occlusion and 3 min reperfusion, 2× per day or no intervention	200–260 mm Hg/ 9 cm	3rd to 14th day post operation	↓ 9.4% & ↓ 9.2% in CSA of knee extensors and flexors, respectively, which was significantly lower than control group (p<0.05)	Not assessed
Ohata <i>et al</i> <sup>42</sup>	ACLR Patients	Prospective, randomised controlled trial	Range of lower limbs exercises, reps, (20–60) sets (1–3 per day), 6 d/wk	180 mmHg/NA	16 weeks postsurgery (BFR began in week 2)	Significant ↑ in muscular strength & CSA with BFR compared to matched protocol without BFR (p<0.05) ↑ in short diameters of type I and II of medial vastus lateralis fibres in BFR group	Not assessed
Iverson <i>et al</i> <sup>42</sup>	ACLR patients (Athletes)	Randomised, blinded, controlled trial	5 × 20 reps of quadriceps exercises with or without BFR (5 min occlusion, followed by 3 min reperfusion), 2 × per day	130–180 mmHg/ 14 cm	2 weeks postsurgery (BFR began on second day)	↓ 13.8% in quadriceps CSA with BFR, which was not significantly different to the control group (p=0.62)	Not assessed

1RM, one repetition maximum; ACLR, anterior cruciate ligament reconstruction; BFR, blood flow restriction; CK, creatine kinase; CSA, cross-sectional area; IGF-1, insulin like growth factor; IGFBP-3, insulin like growth factor binding protein 3; GH, growth hormone; KOOS, Knee Injury and Osteoarthritis Outcome Score; LOP, limb occlusive pressure; MVC, maximal voluntary contraction; MVO, maximal venous outflow; MVIC, maximal voluntary isometric contraction; NA, not applicable; NE, norepinephrine; NPRS, Numerical Pain Rating Scale; PO<sub>2</sub> peak, peak occlusive blood flow; Rbf, resting blood flow; reps, repetition; RHI, Reactive Hyperemia Index; SF, Short Form-36 Health Survey Questionnaire; tcPO<sub>2</sub>, transcutaneous oxygen pressure; TUG, timed up and go; VAS, Visual Analogue Scale; VEGF, vascular endothelial growth factor; VO<sub>2peak</sub>, peak O<sub>2</sub> consumption; vWF, von Willebrand factor.



**Figure 3** Forest plot illustrating the comparison of low-load training with blood flow restriction (BFR) to low-load training alone. Squares indicate individual study Hedges' g and the lines represent 95% CIs. The size of the square corresponds to the weight of the study. The diamond represents the overall Hedges' g, with its width representing the 95% CIs. LL and UL represent the lower and upper limit of 95% CIs, respectively. df, degrees of freedom.

### Outcome measures

Muscle strength was assessed by measurement of maximal isotonic strength,<sup>26 41 49 50 53–55 57 60–63</sup> with a large majority of studies using the 1RM test.<sup>41 45–49 53–55 57 60 62 63</sup> A number of studies examined maximal isometric<sup>27 42 56 57 61</sup> and isokinetic<sup>27 41 42 49 56 57</sup> strength. Muscle size was assessed by examining muscle CSA,<sup>26 27 42 51–53 56 59 61–63</sup> muscle mass,<sup>56</sup> muscle volume,<sup>27 41</sup> muscle thickness<sup>58 60</sup> and fat cross-sectional area (CSA).<sup>59</sup> Studies that assessed physical function included tests of reaction time,<sup>54</sup> stair climb power,<sup>41</sup> single leg balance,<sup>54</sup> timed stands,<sup>53</sup> 10 m walking time,<sup>54</sup> maximum step distance,<sup>54</sup> functional reach test,<sup>54</sup> chair stand<sup>26 56</sup> and the timed up and go test.<sup>26 50 53 54 56</sup> A number of studies reported the presence or absence of any adverse events relating to BFR.<sup>41 49 53–55 57 59 63 64</sup>

### Study quality and reporting

Median values regarding criteria matching were 2 (1–5) for study quality and 5 (3–7) for study reporting. Overall, studies had a median score of 7 out of the 15 possible points (range 4–12). The lowest scoring study scored 4,<sup>58</sup> with the highest scoring 12.<sup>41 49</sup> Studies scored highly for clear specification of inclusion and exclusion criteria (n=20)<sup>26 27 41 42 49–64</sup>; reporting of between-group statistical comparisons (n=19)<sup>26 27 41 42 49–52 54–64</sup>; and the use of point estimates and comparison of baseline measures (n=20).<sup>26 27 41 42 49–64</sup> In contrast, a large majority of studies failed to meet criteria such as specification of the randomisation procedure<sup>26 27 51–63</sup>; blinding of participants (n=16)<sup>26 27 42 50–53 56–58 60–64</sup> and assessors (n=15)<sup>27 42 51 53–64</sup>; and reporting of exercise session attendance (n=15).<sup>26 27 42 50–52 55 56 58–64</sup> A number of studies did not monitor control group physical activity and present these data (n=19)<sup>26 27 41 42 49–63</sup>; report any

or no adverse events to the BFR training (n=11)<sup>26 27 42 50–52 56 58 60–62</sup> or adjust exercise load throughout the training period to account for muscular adaptations (n=9).<sup>26 27 42 50–53 55 57 59 60 62 63</sup> An overview of the scores is presented in table 2.

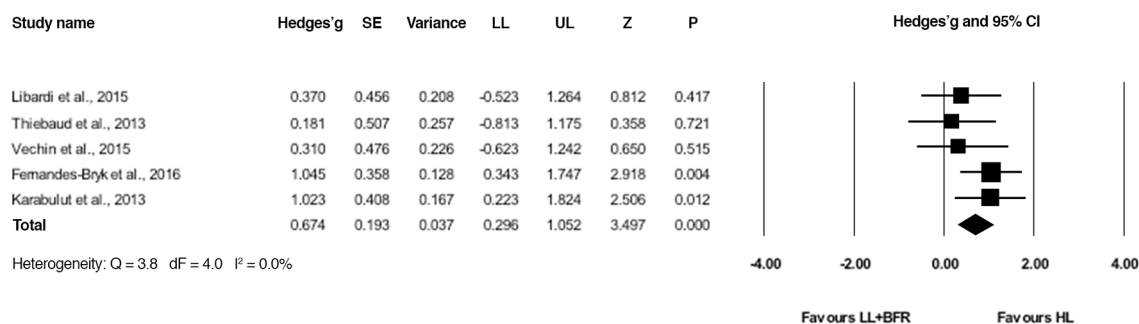
BFR, blood flow restriction; MSK, musculoskeletal; TESTEX, Tool for the assessment of Study quality and reporting in Exercise.

### DISCUSSION

#### Meta-analysis

There is a growing interest in the use of LL-BFR training as a clinical MSK rehabilitation tool; however, the effectiveness of this novel training modality in clinical MSK rehabilitation has not been examined. Therefore, this review has provided insight into its effectiveness as a clinical rehabilitation tool for muscular weakness. The results indicate that augmentation of low-load rehabilitative training with BFR can produce greater responses in muscular strength compared with low-load training alone. At present, the strength gains appear to be smaller in magnitude to those achieved with heavy-load training. However, LL-BFR training is a more effective alternative to low-load training alone and may act as a surrogate for heavy-load training. Thus, LL-BFR training may be used as a progressive clinical rehabilitation tool in the process of return to heavy-load exercise.

The total Hedges' g of 0.52 indicates that with the addition of BFR to low-load training, 69% of the population will experience greater gains in muscular strength.<sup>65</sup> Mechanical tension would likely be similar between these modalities, and at present there is no literature to identify a clear mechanism to explain how LL-BFR training stimulates greater increases in strength compared with low-load training in clinical populations.<sup>41</sup> It may



**Figure 4** Forest plot illustrating the comparison of low-load training with BFR, blood flow restriction (BFR) to heavy-load training. Squares indicate individual study Hedges' g and the lines represent 95% CIs. The size of the square corresponds to the weight of the study. The diamond represents the overall Hedges' g, with its width representing the 95% CIs. LL and UL represent the lower and upper limit of 95% CIs, respectively. df, degrees of freedom.

**Table 2** TESTEX assessment of the quality and reporting of exercise training studies examining BFR in clinical MSK rehabilitation

Study	Study quality criterion						Study reporting criterion										Total	Overall total
	1	2	3	4	5	Total	1	2	3	4	5	6	7	8	9	10	Total	
Segal <i>et al</i> (2015) <sup>41</sup>	1	1	1	1	1	5	1	1	1	0	1	1	1	0	0	1	7	12
Segal <i>et al</i> (2015b) <sup>49</sup>	1	1	1	1	1	5	1	1	1	0	1	1	1	0	0	1	7	12
Karabulut <i>et al</i> (2010) <sup>66</sup>	1	0	1	1	0	3	1	1	0	0	1	1	1	0	1	0	6	9
Patterson & Ferguson (2011) <sup>57</sup>	1	0	0	1	0	2	1	1	1	0	1	1	1	0	1	0	7	9
Karabulut <i>et al</i> (2013) <sup>59</sup>	1	0	1	0	0	2	1	1	0	0	1	1	1	0	1	1	7	9
Shimizu <i>et al</i> (2016) <sup>64</sup>	1	1	0	1	0	3	0	1	0	0	1	1	1	1	0	1	6	9
Fernandes-Bryk <i>et al</i> (2016) <sup>50</sup>	1	1	0	1	1	4	1	0	0	0	1	1	1	0	1	0	5	9
Yokokawa <i>et al</i> (2008) <sup>54</sup>	1	0	0	1	0	2	1	1	1	0	1	1	1	0	0	0	6	8
Ohta <i>et al</i> (2003) <sup>42</sup>	1	1	0	1	0	3	0	0	0	0	1	1	1	0	1	1	5	8
Libardi <i>et al</i> (2015) <sup>63</sup>	1	0	0	1	0	2	0	1	0	0	1	1	1	0	1	0	5	7
Iverson <i>et al</i> (2015) <sup>52</sup>	1	0	0	1	1	3	0	0	0	0	1	1	1	0	1	0	4	7
Thiebaud <i>et al</i> (2013) <sup>60</sup>	1	0	0	1	0	2	1	0	0	0	1	1	1	0	1	0	5	7
Ozaki <i>et al</i> (2011) <sup>26</sup>	1	0	0	1	1	3	0	0	0	0	1	1	1	0	0	0	3	6
Abe <i>et al</i> (2010) <sup>56</sup>	1	0	0	1	0	2	0	0	0	0	1	1	1	0	0	1	4	6
Takarada <i>et al</i> (2000) <sup>23</sup>	1	0	0	1	0	2	0	0	0	0	1	1	1	0	1	0	4	6
Mattar <i>et al</i> (2014) <sup>53</sup>	1	0	0	0	0	1	1	1	1	0	0	0	1	0	1	0	5	6
Ozaki <i>et al</i> (2011b) <sup>27</sup>	1	0	0	1	0	2	0	0	0	0	1	1	1	0	0	0	3	5
Yasuda <i>et al</i> (2015) <sup>61</sup>	1	0	0	1	0	2	0	0	0	0	1	1	1	0	0	0	3	5
Vechin <i>et al</i> (2015) <sup>62</sup>	1	0	0	0	0	1	0	0	0	0	1	1	1	0	1	0	4	5
Iida <i>et al</i> (2011) <sup>58</sup>	1	0	0	0	0	1	0	0	0	0	1	1	1	0	0	0	3	4

likely be driven by hypertrophy and neural adaptations similar to those observed with heavy-load training, and the underlying mechanisms are also likely similar. However, with BFR exercise, these mechanisms may be activated by the combination of tension and hypoxia. It is important to note that this review indicated the strength gains observed with LL-BFR training were smaller in magnitude than those observed with heavy-load training. The total Hedge's *g* of 0.67 suggests that in the comparison of these two training modalities, 76% of the population will experience greater gains in strength with heavy-load training;<sup>65</sup> this is in line with previous research.<sup>36 62</sup>

Although there was insufficient data to examine an effect size for muscle size in the meta-analysis, individual studies have demonstrated greater muscle volume<sup>26</sup> and CSA in both lower<sup>26 27 42</sup> and upper limbs<sup>61</sup> alongside strength increases following LL-BFR training. This reflects findings in the literature involving healthy and athletic cohorts, where LL-BFR training has been shown to elicit greater increases in muscle size compared with low-load training alone.<sup>20 21 23 24</sup> Furthermore, studies comparing LL-BFR training to heavy-load training in individuals with clinical MSK weakness reported similar increases in muscle CSA,<sup>60 62 63</sup> which is in agreement with previous research.<sup>40</sup> A number of factors have been propounded to have a potential role; again, however, no clear mechanism for BFR-induced hypertrophy is known. There appears to be a similarity between LL-BFR and heavy-load exercise in terms of molecular factors that lead to muscle growth. Therefore, the hypertrophy pathway may be similar between these two exercise modalities but possibly in response to different triggers due to, in large part, the characteristics of the exercise.

### Systematic analysis

Results of the systematic TESTEX analysis of all exercise training studies examining BFR in clinical MSK rehabilitation demonstrated that a large majority of studies do not report on any or no adverse events to BFR,<sup>26 27 42 50 52 56 58 60-62</sup> and many are not adjusting and individualising the occlusive stimulus and

training load.<sup>26 27 41 49 54 56 58 61 64</sup> Examination of extracted data regarding MSK and functional outcome measures revealed that LL-BFR training is effective at improving physiological aspects aside from muscle strength<sup>26 27 35 55 57 64 66</sup> and may even be used without exercise to prevent muscle atrophy in early immobilisation.<sup>51</sup> Furthermore, addition of BFR to low-load training does not appear to worsen condition or exercise-related pain;<sup>41 49</sup> however, at present, there is a lack of investigation as to how muscular adaptations impact on an individual's physical function.

### Safety concerns of blood flow restriction training

Despite concerns of disturbed haemodynamics and ischaemic reperfusion injury,<sup>67 68</sup> BFR training has been reviewed in depth<sup>69 70</sup> and correct implementation has been affirmed to present no greater risk than traditional exercise modes.<sup>71</sup> An epidemiological study in Japan reported low occurrence of any of the above adverse effects other than skin bruising.<sup>72</sup> At present, there are no complete standardised recommendations for use even in healthy populations. Recently, cases of rhabdomyolysis have emerged<sup>73 74</sup> despite a reported incidence of 0.008% in the aforementioned study. Most recently, this was reported in an obese Japanese male after only three sets of 20 reps of BFR exercise;<sup>74</sup> however, no information regarding the exercise load or occlusive pressure was available, and the individual had been sedentary for a number of years. It is more likely that the cause was the stress of unaccustomed exercise on a sedentary body or the inappropriate use of BFR. However, another study by Iverson *et al*<sup>73</sup> reported rhabdomyolysis in a 31-year-old ice hockey player after one session of low-load BFR exercise.

This review illustrates that the majority of studies do not report on the presence or absence of adverse events. Although injury resulting from this type of training seems rare,<sup>44</sup> the risks of adverse events may be exacerbated in clinical populations. Although muscle damage is common in BFR exercise<sup>75</sup> and is necessary for training effects/adaptations, the possible risks of rhabdomyolysis occurring during BFR exercise may be

heightened in cases of muscular disuse atrophy. It is important that practitioners rule out potential causes of rhabdomyolysis, such as infections and prolonged immobilisation<sup>76</sup> before implementing training, and include measures of muscle damage markers (eg, serum creatine kinase) throughout the training period. This also emphasises the need for an individualised approach to BFR training when selecting cuff pressure for both safety and effectiveness.

### Effective implementation of BFR training

Despite evidence of the effectiveness and tolerability of LL-BFR training in a clinical setting, various issues must be considered during implementation. Within the current literature, there is a lack of individualised prescription of BFR training. First, the occlusive pressure used is one aspect that should be individualised in the pursuit of safe and effective application. Research in healthy individuals has identified thigh circumference as an important predictor of occlusion pressure,<sup>43</sup> with larger limbs requiring a higher pressure to reach the same level of occlusion as smaller limbs.<sup>77</sup> Therefore, set pressures across a whole clinical cohort may not restrict blood flow to the same extent in all individuals. This may result in adverse cardiovascular outcomes,<sup>78</sup> particularly if selected pressures result in complete arterial occlusion. It may also influence the effectiveness of the BFR stimulus, partially explaining discrepancies in study findings. For instance, the same LL-BFR protocol used in OA women by Segal *et al*<sup>41</sup> did not augment any increases in strength observed in the low-load exercise group in the same study in men.<sup>49</sup> Men tend to have greater thigh circumference than women; therefore, it is conceivable that the same BFR pressure provided an insufficient hypertrophic stimulus in the male study.

A recent technique has emerged whereby calculation of total arterial limb occlusive pressure (LOP) allows for selection of a pressure at a percentage of LOP to standardise the level of occlusion across cohorts. This is used by the Association of Perioperative Registered Nurses to calculate required tourniquet pressures to restrict blood flow during surgery to minimise the risk of adverse events.<sup>79</sup> LOP-based cuff pressures are lower than commonly used pressures but produce an effective surgical environment.<sup>80</sup> Recent research employing this technique during BFR exercise demonstrated that higher LOP pressures are not required for greater facilitation of muscular responses to exercise compared with lower pressures.<sup>22</sup> Furthermore, 40% LOP produced similar increases in muscle size, strength and endurance after 8 weeks of training to that of 90% LOP but without the high ratings of discomfort that were reported with the latter pressure.<sup>81</sup> Lower and more tolerable pressures may elicit sufficient MSK adaptations while minimising the risk of adverse events and pain, highlighting the need for individualised prescription of clinical BFR training.

Individualisation of training prescription tools must also be considered, as this may effect progression and timescale of MSK adaptations. Although pronounced hypertrophy and strength gains have been reported after 4 weeks,<sup>23</sup> 2 weeks<sup>21</sup> and even only 6 days<sup>82</sup> of LL-BFR training, conflicting research demonstrated that BFR did not accelerate strength adaptations following 4 weeks of low-load training,<sup>49</sup> suggesting longer training durations may be necessary.<sup>24</sup> Progression of training load by re-evaluation of training prescription tools such as the 1RM is necessary for continued MSK adaptations to occur. A lack of this may compound the effects of the training stimulus and partially explain any insufficient MSK adaptations observed in longer duration training. The TESTEX analysis in this review revealed a lack of training progression in almost half of the studies, which may partially explain discrepancies in findings of MSK outcomes.<sup>41 49</sup>

A recent review advocated that for clinical populations, two to three LL-BFR training sessions per week with progressive overload is sufficient for enhanced strength adaptations.<sup>44</sup> A previous meta-analysis of healthy cohorts demonstrated that this training frequency maximised adaptations to LL-BFR training.<sup>24</sup> Progression of training may be difficult in certain clinical contexts, particularly post-surgery and during immobilisation. A progression model for using BFR in early rehabilitation through to high-load resistance training has been proposed by Loenneke *et al*,<sup>83</sup> which encompasses a four-step approach: (1) BFR alone during periods of bed rest; (2) BFR combined with low-workload walking exercise; (3) BFR combined with low-load resistance exercise and (4) LL-BFR training in combination with high-load exercise. Considering evidence from this review, a progressive model of BFR training may provide an effective rehabilitation tool from early ambulation to return to heavy-load exercise.

### Other physiological adaptations to BFR training

Findings from the systematic review of all exercise training studies utilising LL-BFR training in clinical MSK rehabilitation identifies adaptations aside from muscle strength. In older adults who are increasingly susceptible to sarcopenia, LL-BFR training was shown to stimulate mTORC1 signalling and muscle protein synthesis in older men.<sup>35</sup> Research has demonstrated increased serum concentrations of bone alkaline phosphatase<sup>66</sup> and increased bone turnover following 6 weeks of LL-BFR training, suggesting an impact on bone health. Low-load walk training with BFR has been demonstrated to increase knee extensor and flexor torque,<sup>55</sup> carotid arterial compliance,<sup>26</sup> peak oxygen uptake,<sup>27</sup> peak post-occlusive blood flow<sup>57</sup> and vascular endothelial function and peripheral nerve circulation<sup>64</sup> in older individuals. LL-BFR training can attenuate the effects of sarcopenia and may be effective at improving bone health. It may also be applicable for other clinical populations who suffer from MSK weakness and bone degradation (eg, patients with osteoporosis, rheumatoid arthritis, multiple myeloma and lymphoma). In premature situations when individuals suffering from muscle weakness are not able to begin even low-load exercise (eg, postoperative immobilisation), BFR alone can be used as an early rehabilitation intervention. Research has demonstrated effective attenuation of muscle atrophy<sup>51</sup> and muscle strength<sup>84</sup> using an occlusion protocol even at a low pressure of 50 mmHg,<sup>85</sup> suggesting that BFR *per se* is effective at minimising atrophy. As high pressures can sometimes cause an uncomfortable dull ache,<sup>86</sup> the notion of utilising lower pressures is clinically relevant. A definitive mechanism behind such adaptations to BFR *per se*, despite the absence of mechanical tension, has not been identified as yet. However, muscular responses to ischaemia and hypoxia induced by BFR such as increased ROS production,<sup>87</sup> cell swelling<sup>31</sup> and other intramuscular metabolic changes<sup>28</sup> may play a role in promoting tissue growth in these situations.

An interesting observation in this systematic review is that the addition of BFR to low-load strength training does not appear to worsen condition or exercise-related pain. In women present with symptomatic factors of knee OA, Segal *et al*<sup>41</sup> found that the greater muscle strength increases observed after 4 weeks of LL-BFR (30% 1 RM) resistance training did not exacerbate knee pain throughout training, assessed using the Knee Injury and Osteoarthritis Outcome Score tool. The same study in men<sup>49</sup> also found that BFR did not worsen knee pain. Research has shown that perceived exertion is higher during acute LL-BFR exercise compared with low-load exercise without BFR (both 30% 1RM).<sup>88</sup> This was also demonstrated



in a study involving older adults,<sup>89</sup> alongside higher reported values for ratings of perceived pain during BFR exercise. However, such reported values for perceived exertion and pain are not necessarily high, and comparison of perceptual responses to LL-BFR (30% 1RM) versus heavy load (70% 1RM) exercise demonstrates that these responses are lower in LL-BFR compared with an equivalent form of exercise at a higher intensity.<sup>90</sup> In addition, research has demonstrated a similar time course of adaptation to perceptual responses between LL-BFR and heavy-load exercise.<sup>91</sup>

This was recently reflected in clinical research when comparing this novel training modality to heavy-load training in patients with OA.<sup>50</sup> The authors actually observed less knee pain during exercise across the training period in the LL-BFR group, likely attributable to the lower exercise load, alongside similar increases in muscle size and strength to the heavy-load group. Considering this and the findings from Hollander *et al*,<sup>90</sup> individuals may be able to tolerate perceptual changes during LL-BFR to a better extent due to lower joint forces and stress. In addition, such research advocates that LL-BFR training may potentially be comparable in effectiveness but more tolerable as a MSK rehabilitation tool compared with heavy-load exercise; however, the current research base for this is limited.

In clinical MSK rehabilitation, much emphasis is placed on an individual's physical function and their quality of life. In this systematic review, it was evident that the majority of current research does not examine how MSK adaptations to BFR training transfer to these aspects. The few studies examining this demonstrated alleviation of condition-related pain<sup>41 50</sup> and changes in various tests of functional ability.<sup>26 47 50</sup> However, more investigation is needed to determine how MSK adaptations to BFR training are linked to changes in physical function and recovery of different clinical conditions.

## CONCLUSION AND RECOMMENDATIONS

Strength training is important for many clinical populations during MSK rehabilitation. The clinical relevance of this review is the demonstration that LL-BFR training can provide a more effective approach to low-load and more tolerable approach to heavy-load rehabilitation. Individualised LL-BFR training prescription may provide a comparable surrogate for heavy-load training while minimising pain during training.<sup>41 50 51 92</sup> This review has discussed some parameters of BFR training necessary to facilitate safe and optimal implementation, allowing clinical practitioners to make more informed decisions on the application of LL-BFR training as a clinical rehabilitation tool. BFR may facilitate early engagement in low-load strength training with limited joint stress in a broad range of clinical populations; therefore, its use in clinical rehabilitation warrants further study. As discussed in this review, future research should adopt an individualised and progressive approach to facilitate the effectiveness and safety of BFR training. And finally, future research must focus on identifying how various training adaptations impact physical function and quality of life during rehabilitation.

### What is already known on this topic?

A number of meta-analyses have demonstrated that low-load blood flow restriction (BFR) training can elicit substantial muscular hypertrophy and strength gains in healthy and athletic populations. The low-load nature of BFR training marks its potential as a clinical rehabilitation tool; however, the effectiveness of BFR training as such a tool has not been systematically examined.

### What are the findings?

This study synthesises the available literature examining low-load BFR training in clinical populations, demonstrating its effectiveness in attenuating strength loss and facilitating strength rehabilitation in clinical populations suffering from musculoskeletal (MSK) weakness. Furthermore, low-load BFR training can have a positive impact on muscle size and numerous other physiological adaptations, and may act as a surrogate for heavy-load strength rehabilitation training in a broad range of clinical populations. Finally, this study provides recommendations regarding: developing a more effective individualised approach to BFR training, safe application of BFR training in a clinical setting and potential clinical conditions where BFR training may be beneficial.

### How might it impact on clinical practice in the near future?

- This manuscript has discussed issues surrounding BFR and provided recommendations regarding the safe and effective implementation of BFR training in clinical MSK rehabilitation.
- This paper may inform clinical practitioners of the many benefits of low-load BFR training and its use as a clinical MSK rehabilitation tool. BFR training is an emerging 'hot topic' in the UK and all around the world at present—this manuscript provides the first evidence base and guidelines within clinical MSK rehabilitation in the National Health Service and private healthcare setting.

**Correction notice** This paper has been amended since it was published Online First. Owing to a scripting error, some of the publisher names in the references were replaced with 'BMJ Publishing Group'. This only affected the full text version, not the PDF. We have since corrected these errors and the correct publishers have been inserted into the references.

**Contributors** LH and SDP participated in protocol design, data extraction, data analyses and manuscript preparation. CG participated in data analyses and manuscript preparation. BR and BP participated in protocol design and manuscript preparation. All authors have read and approved the final manuscript.

**Competing interests** None declared.

**Provenance and peer review** Not commissioned; externally peer reviewed.

© Article author(s) (or their employer(s) unless otherwise stated in the text of the article) 2017. All rights reserved. No commercial use is permitted unless otherwise expressly granted.

## References

- 1 Thomas AC, Wojtyś EM, Brandon C, *et al*. Muscle atrophy contributes to quadriceps weakness after anterior cruciate ligament reconstruction. *J Sci Med Sport* 2016;19:7–11.
- 2 Pettersson SC, Barrance P, Buchanan T, *et al*. Mechanisms underlying quadriceps weakness in knee osteoarthritis. *Med Sci Sports Exerc* 2008;40:422–7.
- 3 Palmieri-Smith RM, Thomas AC, Karvonen-Gutierrez C, *et al*. Isometric quadriceps strength in women with mild, moderate, and severe knee osteoarthritis. *Am J Phys Med Rehabil* 2010;89:541–8.
- 4 Papalia R, Zampogna B, Torre G, *et al*. Sarcopenia and its relationship with osteoarthritis: risk factor or direct consequence? *Musculoskelet Surg* 2014;98:9–14.
- 5 Vos T, Flaxman AD, Naghavi M, *et al*. Years lived with disability (YLDs) for 1160 sequelae of 289 diseases and injuries 1990–2010: a systematic analysis for the Global Burden of Disease Study 2010. *Lancet* 2012;380:2163–96.
- 6 Woolf AD, Pfleger B. Burden of major musculoskeletal conditions. *Bull World Health Organ* 2003;81:646–56.
- 7 Lang T, Streeter T, Cawthon P, *et al*. Sarcopenia: etiology, clinical consequences, intervention, and assessment. *Osteoporos Int* 2010;21:543–59.

- 8 Dinenna FA, Jones PP, Seals DR, *et al.* Limb blood flow and vascular conductance are reduced with age in healthy humans: relation to elevations in sympathetic nerve activity and declines in oxygen demand. *Circulation* 1999;100:164–70.
- 9 Blain H, Vuillemin A, Teissier A, *et al.* Influence of muscle strength and body weight and composition on regional bone mineral density in healthy women aged 60 years and over. *Gerontology* 2001;47:207–12.
- 10 Breen L, Phillips SM. Skeletal muscle protein metabolism in the elderly: interventions to counteract the ‘anabolic resistance’ of ageing. *Nutr Metab* 2011;8:68.
- 11 Segal NA, Torner JC, Felson D, *et al.* Effect of thigh strength on incident radiographic and symptomatic knee osteoarthritis in a longitudinal cohort. *Arthritis Rheum* 2009;61:1210–7.
- 12 Segal NA, Glass NA, Felson DT, *et al.* Effect of quadriceps strength and proprioception on risk for knee osteoarthritis. *Med Sci Sports Exerc* 2010;42:2081–8.
- 13 Amin S, Baker K, Niu J, *et al.* Quadriceps strength and the risk of cartilage loss and symptom progression in knee osteoarthritis. *Arthritis Rheum* 2009;60:189–98.
- 14 Narici MV, Reeves ND, Morse CI, *et al.* Muscular adaptations to resistance exercise in the elderly. *J Musculoskelet Neuronal Interact* 2004;4:161–4.
- 15 Garber CE, Blissmer B, Deschenes MR, *et al.* American College of Sports Medicine. American college of sports medicine position stand. quantity and quality of exercise for developing and maintaining cardiorespiratory, musculoskeletal, and neuromotor fitness in apparently healthy adults: guidance for prescribing exercise. *Med Sci Sports Exerc* 2011;43:1334–59.
- 16 Ogasawara R, Loenneke JP, Thiebaud RS, *et al.* Low-load bench press training to fatigue results in muscle hypertrophy similar to high-load bench press training. *Int J Clin Med* 2013;4:114–21.
- 17 Schoenfeld BJ, Peterson MD, Ogborn D, *et al.* Effects of low- vs. high-load resistance training on muscle strength and hypertrophy in well-trained men. *J Strength Cond Res* 2015;29:2954–63.
- 18 Schoenfeld BJ, Wilson JM, Lowery RP, *et al.* Muscular adaptations in low- versus high-load resistance training: a meta-analysis. *Eur J Sport Sci* 2016;16:1–10.
- 19 Burgomaster KA, Moore DR, Schofield LM, *et al.* Resistance training with vascular occlusion: metabolic adaptations in human muscle. *Med Sci Sports Exerc* 2003;35:1203–8.
- 20 Takarada Y, Tsuruta T, Ishii N. Cooperative effects of exercise and occlusive stimuli on muscular function in low-intensity resistance exercise with moderate vascular occlusion. *Jpn J Physiol* 2004;54:585–92.
- 21 Abe T, Kawamoto K, Yasuda T, *et al.* Eight days KAATSU-resistance training improved sprint but not jump performance in collegiate male track and field athletes. *Int J KAATSU Train Res* 2005;1:19–23.
- 22 Loenneke JP, Kim D, Fahs CA, *et al.* Effects of exercise with and without different degrees of blood flow restriction on torque and muscle activation. *Muscle Nerve* 2015;51:713–21.
- 23 Takarada Y, Takazawa H, Sato Y, *et al.* Effects of resistance exercise combined with moderate vascular occlusion on muscular function in humans. *J Appl Physiol* 2000a;88:2097–106.
- 24 Loenneke JP, Wilson JM, Marin PJ, *et al.* Low intensity blood flow restriction training: a meta-analysis. *Eur J Appl Physiol* 2012a;112:1849–59.
- 25 Abe T, Fujita S, Nakajima T, *et al.* Effects of Low-intensity cycle training with restricted leg blood flow on thigh muscle volume and VO<sub>2</sub>max in young men. *J Sports Sci Med* 2010;9:452–8.
- 26 Ozaki H, Miyachi M, Nakajima T, *et al.* Effects of 10 weeks walk training with leg blood flow reduction on carotid arterial compliance and muscle size in the elderly adults. *Angiology* 2011;62:81–6.
- 27 Ozaki H, Sakamaki M, Yasuda T, *et al.* Increases in thigh muscle volume and strength by walk training with leg blood flow reduction in older participants. *J Gerontol* 2011b;66:275–263.
- 28 Pearson SJ, Hussain SR. A review on the mechanisms of blood-flow restriction resistance training-induced muscle hypertrophy. *Sports Med* 2015;45:187–200.
- 29 Takarada Y, Nakamura Y, Aruga S, *et al.* Rapid increase in plasma growth hormone after low-intensity resistance exercise with vascular occlusion. *J Appl Physiol* 2000b;88:61–5.
- 30 Reeves GV, Kraemer RR, Hollander DB, *et al.* Comparison of hormone responses following light resistance exercise with partial vascular occlusion and moderately difficult resistance exercise without occlusion. *J Appl Physiol* 2006;101:1616–22.
- 31 Loenneke JP, Fahs CA, Rossow LM, *et al.* The anabolic benefits of venous blood flow restriction training may be induced by muscle cell swelling. *Med Hypotheses* 2012b;78:151–4.
- 32 Kawada S, Ishii N. Skeletal muscle hypertrophy after chronic restriction of venous blood flow in rats. *Med Sci Sports Exerc* 2005;37:1144–50.
- 33 Pope ZK, Willardson JM, Schoenfeld BJ, *et al.* Exercise and blood flow restriction. *J Strength Cond Res* 2013;27:2914–26.
- 34 Fujita S, Abe T, Drummond MJ, *et al.* Blood flow restriction during low-intensity resistance exercise increases S6K1 phosphorylation and muscle protein synthesis. *J Appl Physiol* 2007;103:903–10.
- 35 Fry CS, Glynn EL, Drummond MJ, *et al.* Blood flow restriction exercise stimulates mTORC1 signaling and muscle protein synthesis in older men. *J Appl Physiol* 2010;108:1199–209.
- 36 Laurentino GC, Ugrinowitsch C, Roschel H, *et al.* Strength training with blood flow restriction diminishes myostatin gene expression. *Med Sci Sports Exerc* 2012;44:406–12.
- 37 Takarada Y, Sato Y, Ishii N. Effects of resistance exercise combined with vascular occlusion on muscle function in athletes. *Eur J Appl Physiol* 2002;86:308–14.
- 38 Yasuda T, Brechue WF, Fujita T, *et al.* Muscle activation during low-intensity muscle contractions with restricted blood flow. *J Sports Sci* 2009;27:479–89.
- 39 Yasuda T, Loenneke JP, Ogasawara R, *et al.* Influence of continuous or intermittent blood flow restriction on muscle activation during low-intensity multiple sets of resistance exercise. *Acta Physiol Hung* 2013;100:419–26.
- 40 Wernbom M, Augustsson J, Raastad T, *et al.* A low-load alternative to heavy resistance exercise? *Scand J Med Sci Sports* 2008;18:401–16.
- 41 Segal NA, Williams GN, Davis MC, *et al.* Efficacy of blood flow restricted, low-load resistance training in women with risk factors for symptomatic knee osteoarthritis. *PM&R* 2015;7:376–84.
- 42 Ohta H, Kurosawa H, Ikeda H, *et al.* Low-load resistance muscular training with moderate restriction of blood flow after anterior cruciate ligament reconstruction. *Acta Orthop Scand* 2003;74:62–8.
- 43 Loenneke JP, Fahs CA, Rossow LM, *et al.* Effects of cuff width on arterial occlusion: implications for blood flow restricted exercise. *Eur J Appl Physiol* 2012c;112:2903–12.
- 44 Scott BR, Loenneke JP, Slattery KM, *et al.* Exercise with blood flow restriction: an updated evidence-based approach for enhanced muscular development. *Sports Med* 2015;45:148–50.
- 45 Moher D, Shamseer L, Clarke M, *et al.* PRISMA-P Group. Preferred reporting items for systematic review and meta-analysis protocols (PRISMA-P) 2015 statement. *Syst Rev* 2015;4:1–9.
- 46 Higgins JPT, Altman DG. Assessing risk of bias in included studies. In: Higgins JPT, Green S, eds. *Cochrane handbook for systematic reviews of interventions*. Version 5.0.1. Oxford: The Cochrane Collaboration, 2008:187–235.
- 47 Higgins JPT, Green S. *Cochrane handbook for systematic reviews of interventions*. Chichester: Wiley Blackwell, 2008.
- 48 Smart NA, Waldron M, Ismail H, *et al.* Validation of a new tool for the assessment of study quality and reporting in exercise training studies: TESTEX. *Int J Evid Based Healthc* 2015;13:9–18.
- 49 Segal N, Davis MD, Mikesky AE. Efficacy of blood flow-restricted low-load resistance training for quadriceps strengthening in men at risk of symptomatic knee osteoarthritis. *Geriatr Orthop Surg Rehabil* 2015b;6:160–7.
- 50 Bryk FF, Dos Reis AC, Fingerhut D, *et al.* Exercises with partial vascular occlusion in patients with knee osteoarthritis: a randomized clinical trial. *Knee Surg Sports Traumatol Arthrosc* 2016;24:1580–6.
- 51 Takarada Y, Takazawa H, Ishii N. Applications of vascular occlusion diminish disuse atrophy of knee extensor muscles. *Med Sci Sports Exerc* 2000c;32:2035–9.
- 52 Iversen E, Røstad V, Larmo A. Intermittent blood flow restriction does not reduce atrophy following anterior cruciate ligament reconstruction. *J Sport Health Sci* 2016;5:115–8.
- 53 Mattar MA, Gualano B, Perandini LA, *et al.* Safety and possible effects of low-intensity resistance training associated with partial blood flow restriction in polymyositis and dermatomyositis. *Arthritis Res Ther* 2014;16:473.
- 54 Yokokawa Y, Hongo M, Urayama H, *et al.* Effects of low-intensity resistance exercise with vascular occlusion on physical function in healthy elderly people. *Biosci Trends* 2008;2:117–23.
- 55 Karabulut M, Abe T, Sato Y, *et al.* The effects of low-intensity resistance training with vascular restriction on leg muscle strength in older men. *Eur J Appl Physiol* 2010;108:147–55.
- 56 Abe T, Sakamaki M, Fujita S, *et al.* Effects of low-intensity walk training with restricted leg blood flow on muscle strength and aerobic capacity in older adults. *J Geriatr Phys Ther* 2010;33:34–40.
- 57 Patterson SD, Ferguson RA. Enhancing strength and postocclusive calf blood flow in older people with training with blood-flow restriction. *J Aging Phys Act* 2011;19:201–13.
- 58 Iida H, Nakajima T, Kurano M, *et al.* Effects of walking with blood flow restriction on limb venous compliance in elderly subjects. *Clin Physiol Funct Imaging* 2011;31:472–6.
- 59 Karabulut M, Sherk VD, Bemben DA, *et al.* Inflammation marker, damage marker and anabolic hormone responses to resistance training with vascular restriction in older males. *Clin Physiol Funct Imaging* 2013;33:393–9.
- 60 Thiebaud RS, Loenneke JP, Fahs CA, *et al.* The effects of elastic band resistance training combined with blood flow restriction on strength, total bone-free lean body mass and muscle thickness in postmenopausal women. *Clin Physiol Funct Imaging* 2013;33:344–52.
- 61 Yasuda T, Fukumura K, Uchida Y, *et al.* Effects of low-load, elastic band resistance training combined with blood flow restriction on muscle size and arterial stiffness in older adults. *J Gerontol A Biol Sci Med Sci* 2015;70:950–8.
- 62 Vechin FC, Libardi CA, Conceição MS, *et al.* Comparisons between low-intensity resistance training with blood flow restriction and high-intensity resistance training on quadriceps muscle mass and strength in elderly. *J Strength Cond Res* 2015;29:1071–6.

- 63 Libardi CA, Chacon-Mikahil MP, Cavaglieri CR, *et al.* Effect of concurrent training with blood flow restriction in the elderly. *Int J Sports Med* 2015;36:395–9.
- 64 Shimizu R, Hotta K, Yamamoto S, *et al.* Low-intensity resistance training with blood flow restriction improves vascular endothelial function and peripheral blood circulation in healthy elderly people. *Eur J Appl Physiol* 2016;116:749–57.
- 65 Coe R, . It's the effect size, stupid. What effect size is and why is it important. . Exeter, UK: British Educational Research Association 2002; 12–14.
- 66 Karabulut M, Bembem DA, Sherk VD, *et al.* Effects of high-intensity resistance training and low-intensity resistance training with vascular restriction on bone markers in older men. *Eur J Appl Physiol* 2011;111:1659–67.
- 67 Wacławowski G, Lehnen AM. Hemodynamics of aerobic and resistance blood flow restriction exercise in young and older adults. *Eur J Appl Physiol* 2016;116:859–60.
- 68 Fitzgibbons PG, Digiovanni C, Hares S, *et al.* Safe tourniquet use: a review of the evidence. *J Am Acad Orthop Surg* 2012;20:310–9.
- 69 Manini TM, Clark BC. Blood flow restricted exercise and skeletal muscle health. *Exerc Sport Sci Rev* 2009;37:78–85.
- 70 Pope ZK, Willardson JM, Schoenfeld BJ. Exercise and blood flow restriction. *J Strength Cond Res* 2013;27:2914–26.
- 71 Loenneke JP, Wilson JM, Wilson GJ, *et al.* Potential safety issues with blood flow restriction training. *Scand J Med Sci Sports* 2011;21:510–8.
- 72 Nakajima T, Kurano M, Iida H, *et al.* Use and safety of KAATSU training: results of a national survey. *Int J KAATSU Train Res* 2006;2:5–13.
- 73 Iversen E, Røstad V. Low-load ischemic exercise-induced rhabdomyolysis. *Clin J Sport Med* 2010;20:218–9.
- 74 Tabata S, Suzuki Y, Azuma K, *et al.* Rhabdomyolysis after performing blood flow restriction training: a case report. *J Strength Cond Res* 2016;30:2064–8.
- 75 Umbel JD, Hoffman RL, Dearth DJ, *et al.* Delayed-onset muscle soreness induced by low-load blood flow-restricted exercise. *Eur J Appl Physiol* 2009;107:687–95.
- 76 Allison RC, Bedsole DL. The other medical causes of rhabdomyolysis. *Am J Med Sci* 2003;326:79–88.
- 77 Heitkamp HC. Training with blood flow restriction. Mechanisms, gain in strength and safety. *J Sports Med Phys Fitness* 2015;55:446–56.
- 78 Jessee MB, Buckner SL, Mouser JG, *et al.* Letter to the editor: Applying the blood flow restriction pressure: the elephant in the room. *Am J Physiol Heart Circ Physiol* 2016;310:H132–3.
- 79 AORN Recommended Practices Committee. Recommended practices for the use of the pneumatic tourniquet in the perioperative practice setting. *AORN J* 2007;86:640–55.
- 80 McEwen JA, Inkpen K. Tourniquet safety: preventing skin injuries. *Surgical Technol* 2002;34:6–15.
- 81 Counts BR, Dankel SJ, Barnett BE, *et al.* Influence of relative blood flow restriction pressure on muscle activation and muscle adaptation. *Muscle Nerve* 2016;53:438–45.
- 82 Fujita T, Brechue WF, Kurita K, *et al.* Increased muscle volume and strength following six days of low-intensity resistance training with restricted muscle blood flow. *Int J KAATSU Train Res* 2008;4:1–8.
- 83 Loenneke JP, Abe T, Wilson JM, *et al.* Blood flow restriction: an evidence based progressive model (review). *Acta Physiol Hung* 2012d;99:235–50.
- 84 Kubota A, Sakuraba K, Sawaki K, *et al.* Prevention of disuse muscular weakness by restriction of blood flow. *Med Sci Sports Exerc* 2008;40:529–34.
- 85 Kubota A, Sakuraba K, Koh S, *et al.* Blood flow restriction by low compressive force prevents disuse muscular weakness. *J Sci Med Sport* 2011;14:95–9.
- 86 Van der Spuy L. Complications of the arterial tourniquet. *South Afr J Anaesth Analg* 2012;18:14–18.
- 87 Kalogeris T, Bao Y, Korthuis RJ. Mitochondrial reactive oxygen species: a double edged sword in ischemia/reperfusion vs preconditioning. *Redox Biol* 2014;2:702–14.
- 88 Loenneke JP, Balapur A, Thrower AD, *et al.* The perceptual responses to occluded exercise. *Int J Sports Med* 2011;32:181–4.
- 89 Staunton CA, May AK, Brandner CR, *et al.* Haemodynamics of aerobic and resistance blood flow restriction exercise in young and older adults. *Eur J Appl Physiol* 2015;115:2293–302.
- 90 Hollander DB, Reeves GV, Clavier JD, *et al.* Partial occlusion during resistance exercise alters effort sense and pain. *J Strength Cond Res* 2010;24:235–43.
- 91 Martín-Hernández J, Ruiz-Aguado J, Herrero JA, *et al.* Adaptation of perceptual responses to low load blood flow restriction training. *J Strength Cond Res* 2016;1.
- 92 Lejkowski PM, Pajaczkowski JA. Utilization of vascular restriction training in post-surgical knee rehabilitation: a case report and introduction to an under-reported training technique. *J Can Chiropr Assoc* 2011;55:280–7.